

Verkauf

11 800 000 €

Produkttyp Wohnung	Zimmer 5 Zimmer	Gebäude Patio Palace	District Jardin Exotique
Wohnfläche 220,67 m²	Terrasse Fläche 73,08 m²	Totale Fläche 293,75 m²	Chambres 3
Salles de bains 3	Keller 2	Stockwerk 12	Zustand Gutem Zustand
Verfügbar ab Novembre 2023	Hinweis MIMVTEPATIO		

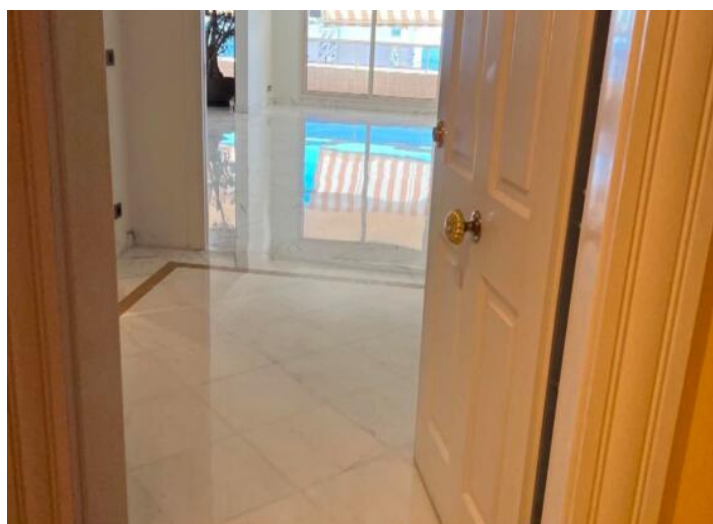


MonteCarlo-RealEstate.com

Seite
1/4

Hinweis : MIMVTEPATIO

This document does not form part of any offer or contract. All measurements, areas and distances are approximate. The information and plans contained herein are believed to be correct, however, their accuracy is not guaranteed. The photographs show only certain parts of the property at the time they were taken. This offer is subject to change of price or other conditions, without prior notice.





**LE
PATIO
PALACE**
12ème Etage
4/5 Pièces H
SURFACE HABITABLE : 220.67 m²
SURFACE TERRASSES : 73.06 m²
SURFACE TOTALE : 293.75 m²

