



CAROLI REAL ESTATE
GROUPE CAROLI

Caroli Real Estate

27, boulevard d'Italie
98000 Monaco

Tél : +377 93 25 51 22

Fax : +377 92 16 17 00

commercial.carolirealestate@groupecaroli.mc

www.caroli-realestate.com

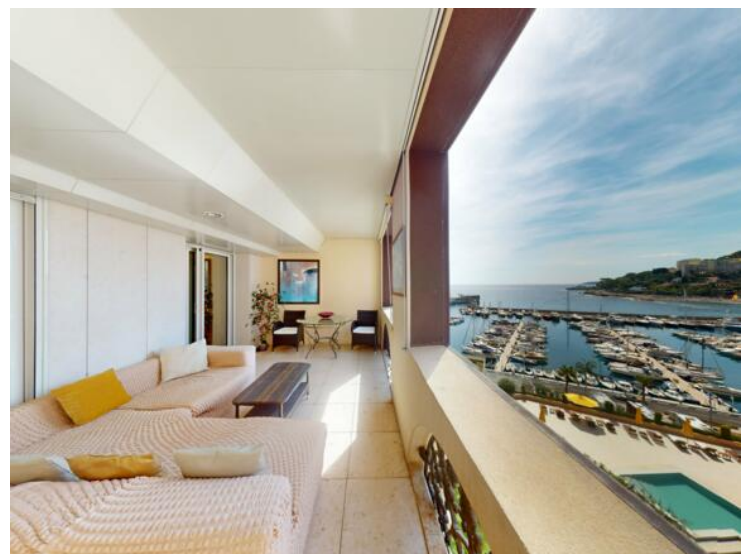


Verkauf

Exclusivité

Preis auf Anfrage

<i>Produkttyp</i> Wohnung	<i>Zimmer</i> 6	<i>Gebäude</i> Seaside Plaza	<i>District</i> Fontvieille
<i>Wohnfläche</i> 265 m²	<i>Terrasse Fläche</i> 92 m²	<i>Totale Fläche</i> 357 m²	<i>Chambres</i> 4
<i>Salles de bains</i> 4	<i>Parkplätze</i> 2	<i>Keller</i> 2	<i>Hinweis</i> SEASIDE_PENT



MonteCarlo-RealEstate.com

Seite
1/5

Hinweis : SEASIDE_PENT

This document does not form part of any offer or contract. All measurements, areas and distances are approximate. The information and plans contained herein are believed to be correct, however, their accuracy is not guaranteed. The photographs show only certain parts of the property at the time they were taken. This offer is subject to change of price or other conditions, without prior notice.



CAROLI REAL ESTATE
GROUPE CAROLI

Caroli Real Estate

Tél : +377 93 25 51 22

Fax : +377 92 16 17 00

commercial.carolirealestate@groupecaroli.mc

www.caroli-realestate.com

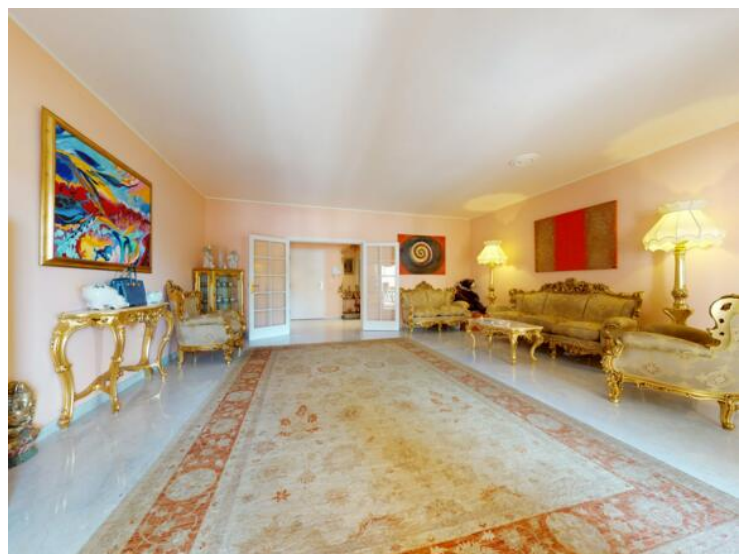
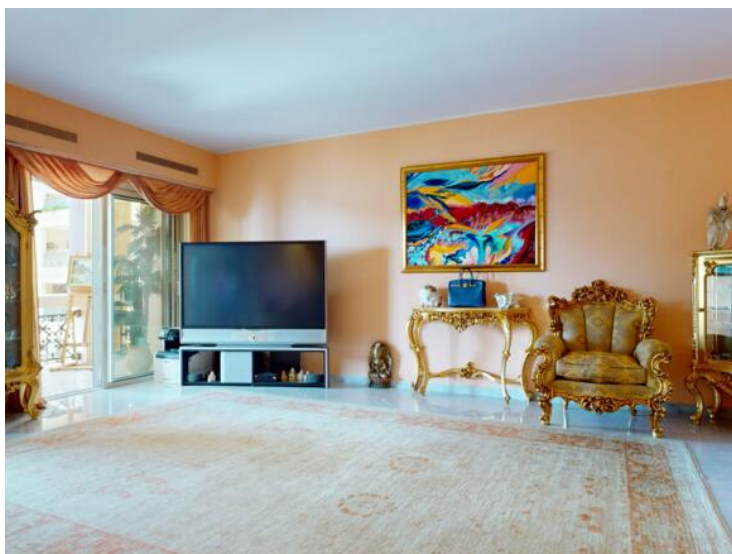


MonteCarlo-RealEstate.com

Seite
2/5

Hinweis : SEASIDE_PENT

This document does not form part of any offer or contract. All measurements, areas and distances are approximate. The information and plans contained herein are believed to be correct, however, their accuracy is not guaranteed. The photographs show only certain parts of the property at the time they were taken. This offer is subject to change of price or other conditions, without prior notice.





CAROLI REAL ESTATE
GROUPE CAROLI

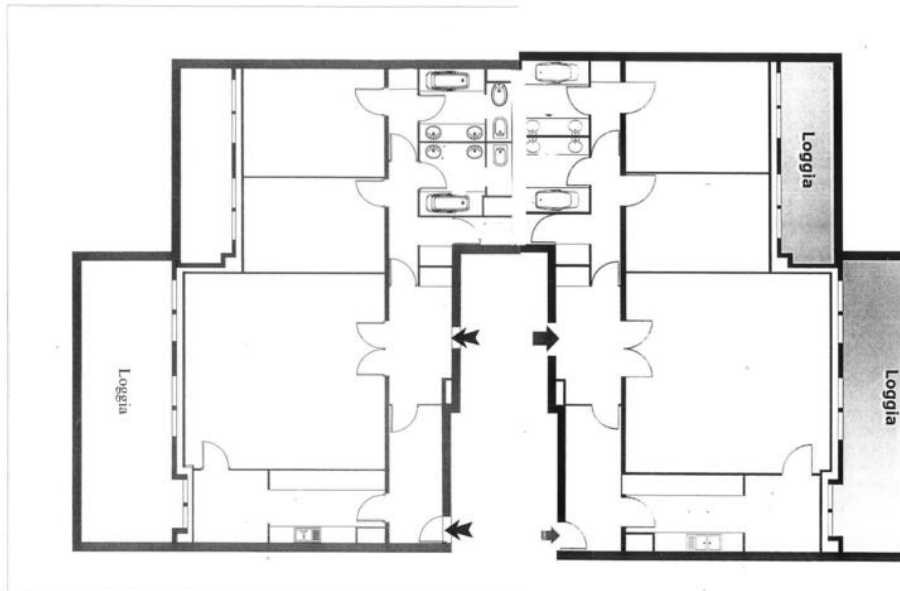
Caroli Real Estate

Tél : +377 93 25 51 22

Fax : +377 92 16 17 00

commercial.carolirealestate@groupecaroli.mc

www.caroli-realestate.com



MonteCarlo-RealEstate.com

Seite
4/5

Hinweis : SEASIDE_PENT

This document does not form part of any offer or contract. All measurements, areas and distances are approximate. The information and plans contained herein are believed to be correct, however, their accuracy is not guaranteed. The photographs show only certain parts of the property at the time they were taken. This offer is subject to change of price or other conditions, without prior notice.



CAROLI REAL ESTATE
GROUPE CAROLI

Caroli Real Estate

Tél : +377 93 25 51 22

Fax : +377 92 16 17 00

commercial.carolirealestate@groupecaroli.mc

www.caroli-realestate.com



MonteCarlo-RealEstate.com

Seite
5/5

Hinweis : SEASIDE_PENT

This document does not form part of any offer or contract. All measurements, areas and distances are approximate. The information and plans contained herein are believed to be correct, however, their accuracy is not guaranteed. The photographs show only certain parts of the property at the time they were taken. This offer is subject to change of price or other conditions, without prior notice.