

## Verkauf

## Preis auf Anfrage

<i>Produkttyp</i> <b>Wohnung</b>	<i>Zimmer</i> <b>6</b>	<i>Gebäude</i> <b>Tour Odéon</b>	<i>District</i> <b>La Rousse - Saint Roman</b>
<i>Wohnfläche</i> <b>880 m<sup>2</sup></b>	<i>Terrasse Fläche</i> <b>295 m<sup>2</sup></b>	<i>Totale Fläche</i> <b>1 175 m<sup>2</sup></b>	<i>Chambres</i> <b>5</b>
<i>Parkplätze</i> <b>7</b>	<i>Zustand</i> <b>Excellent</b>	<i>Hinweis</i> <b>517V15918A68</b>	

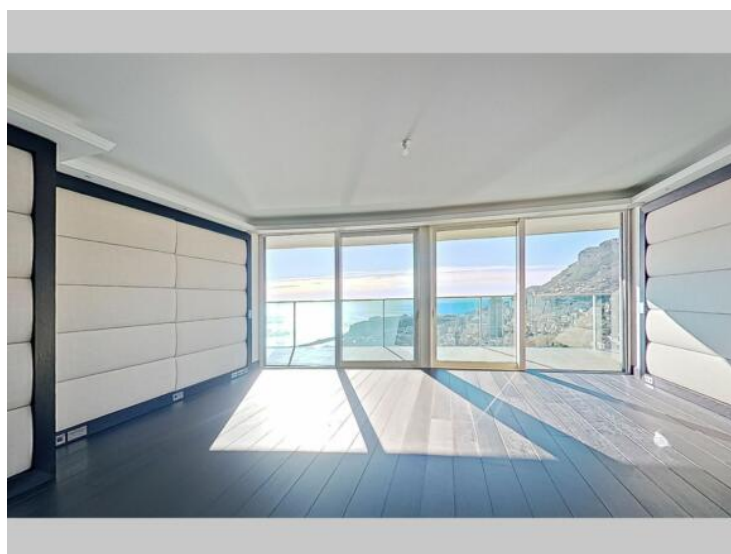
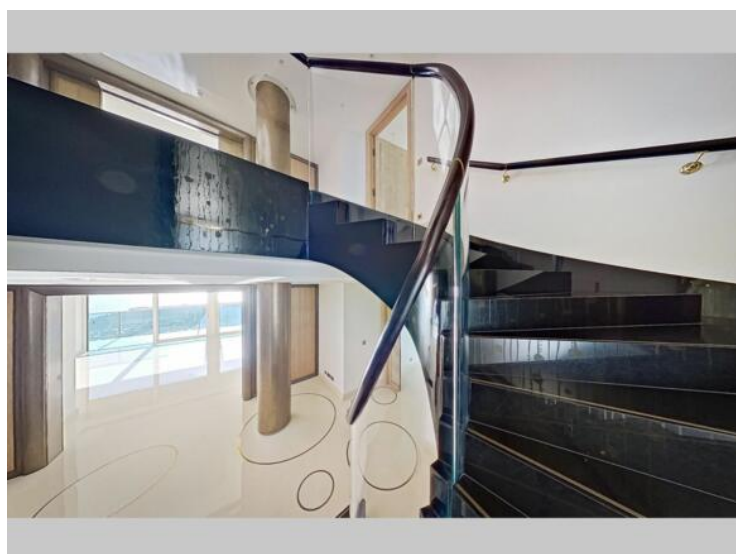
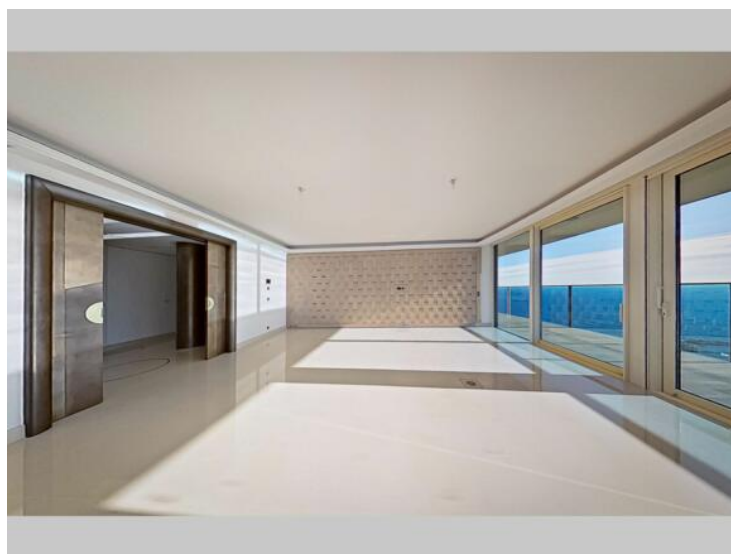
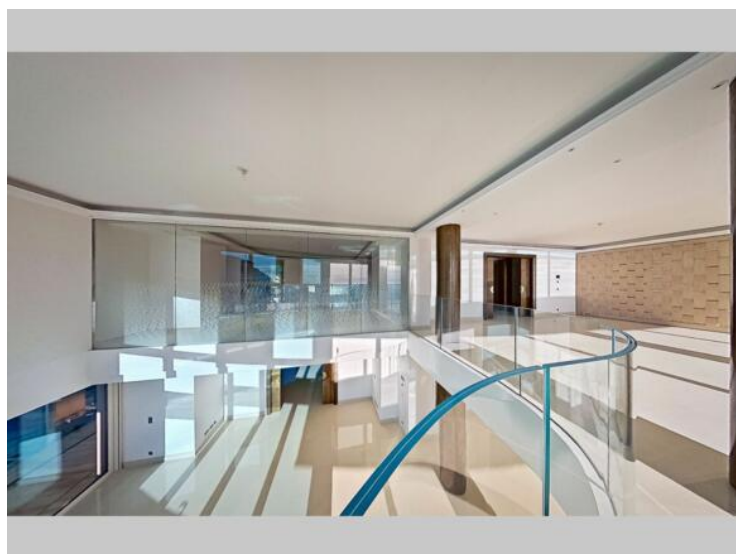
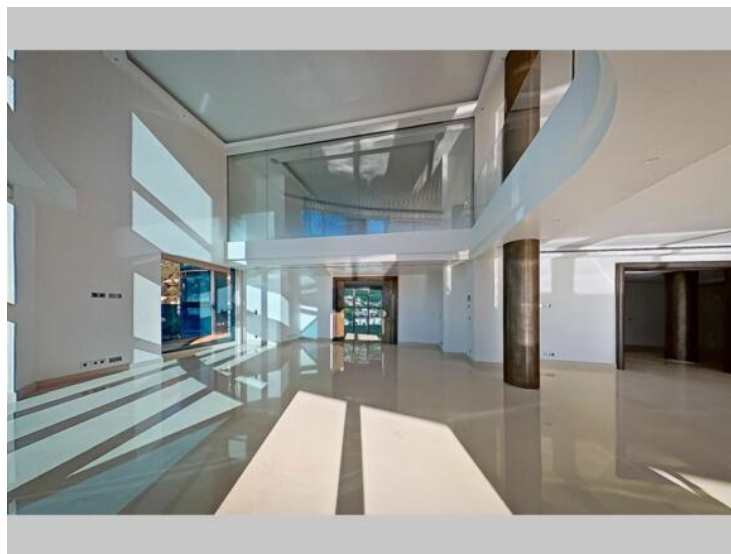
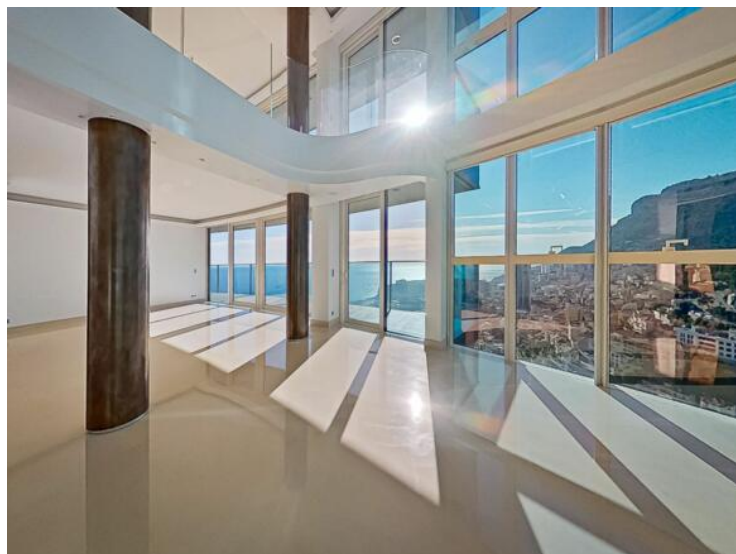


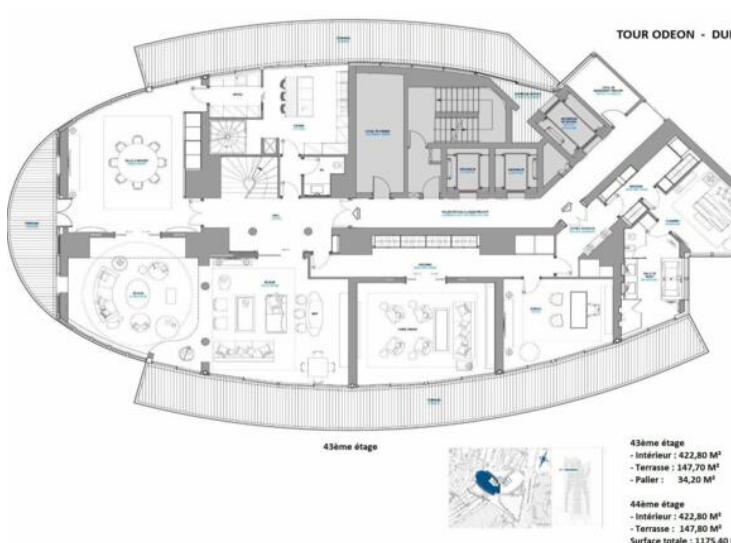
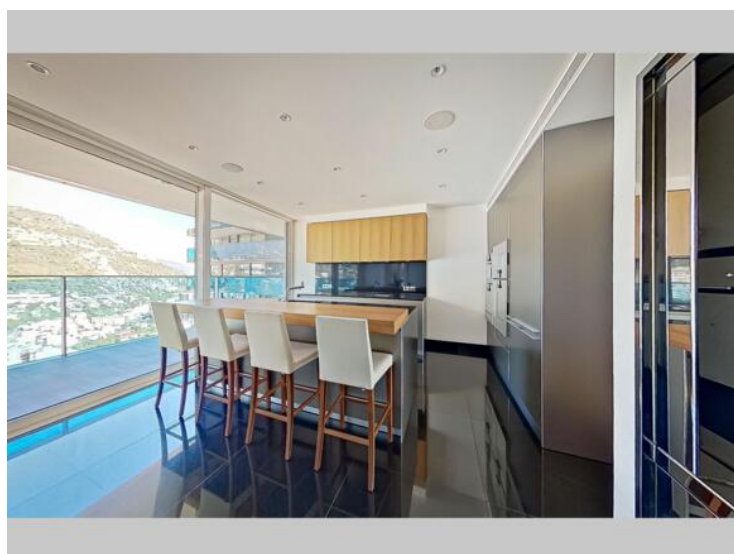
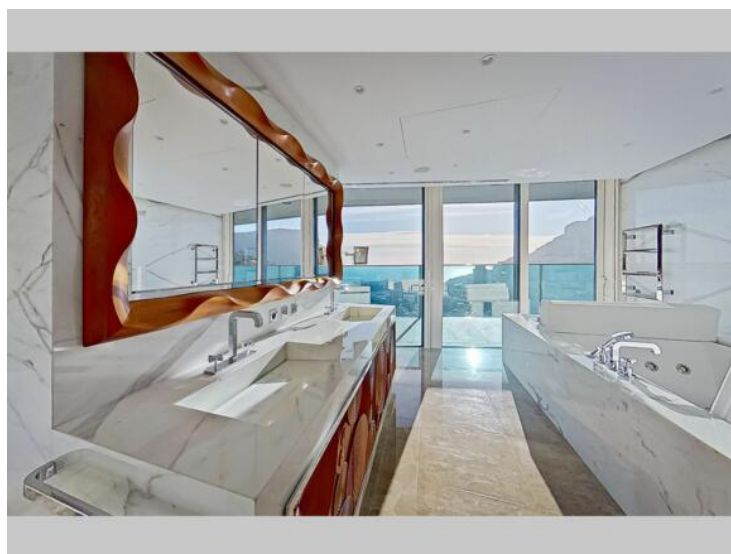
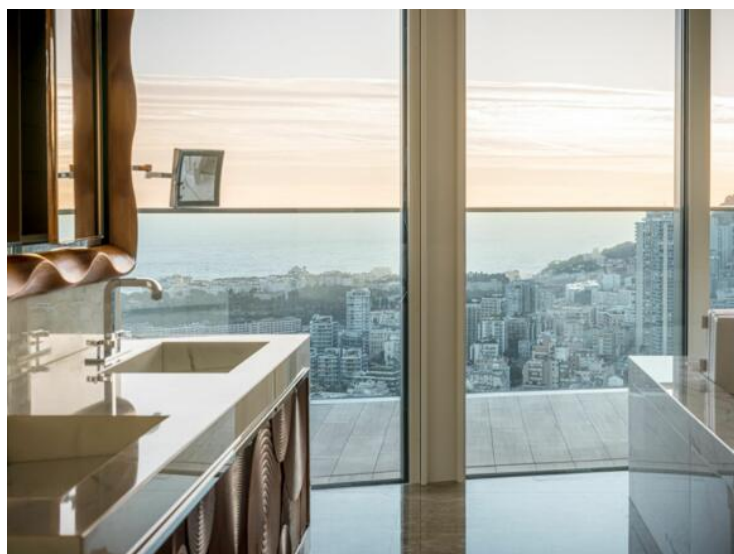
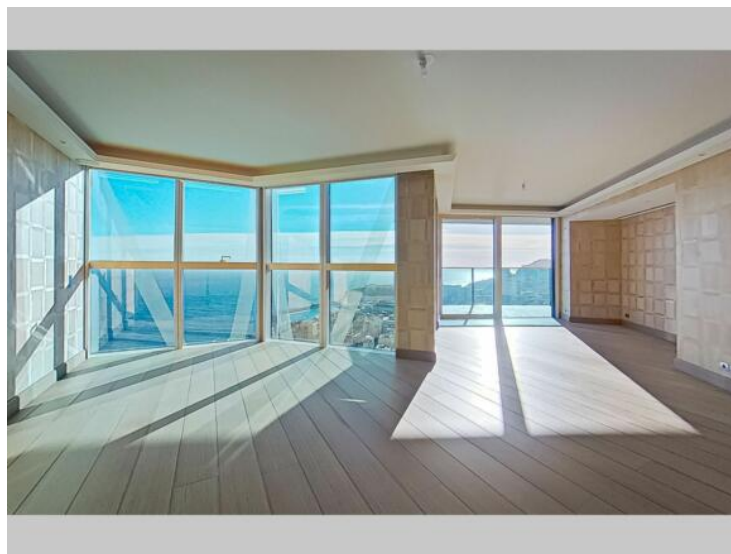
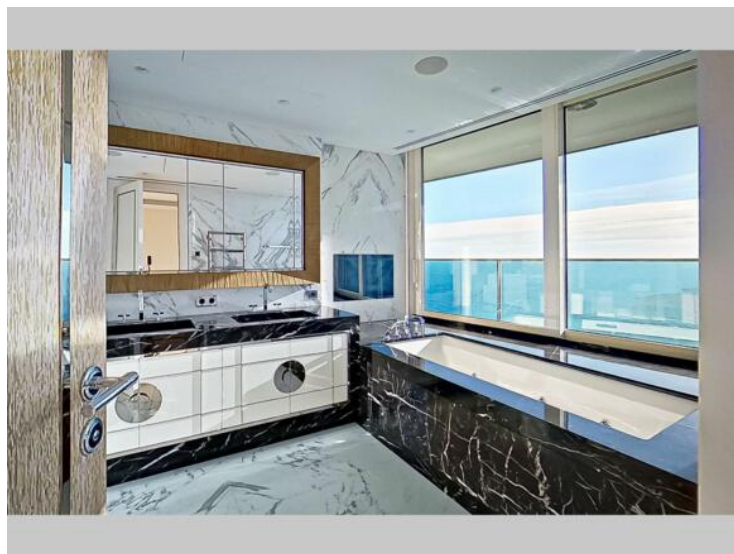
[MonteCarlo-RealEstate.com](https://montecarlo-realestate.com)

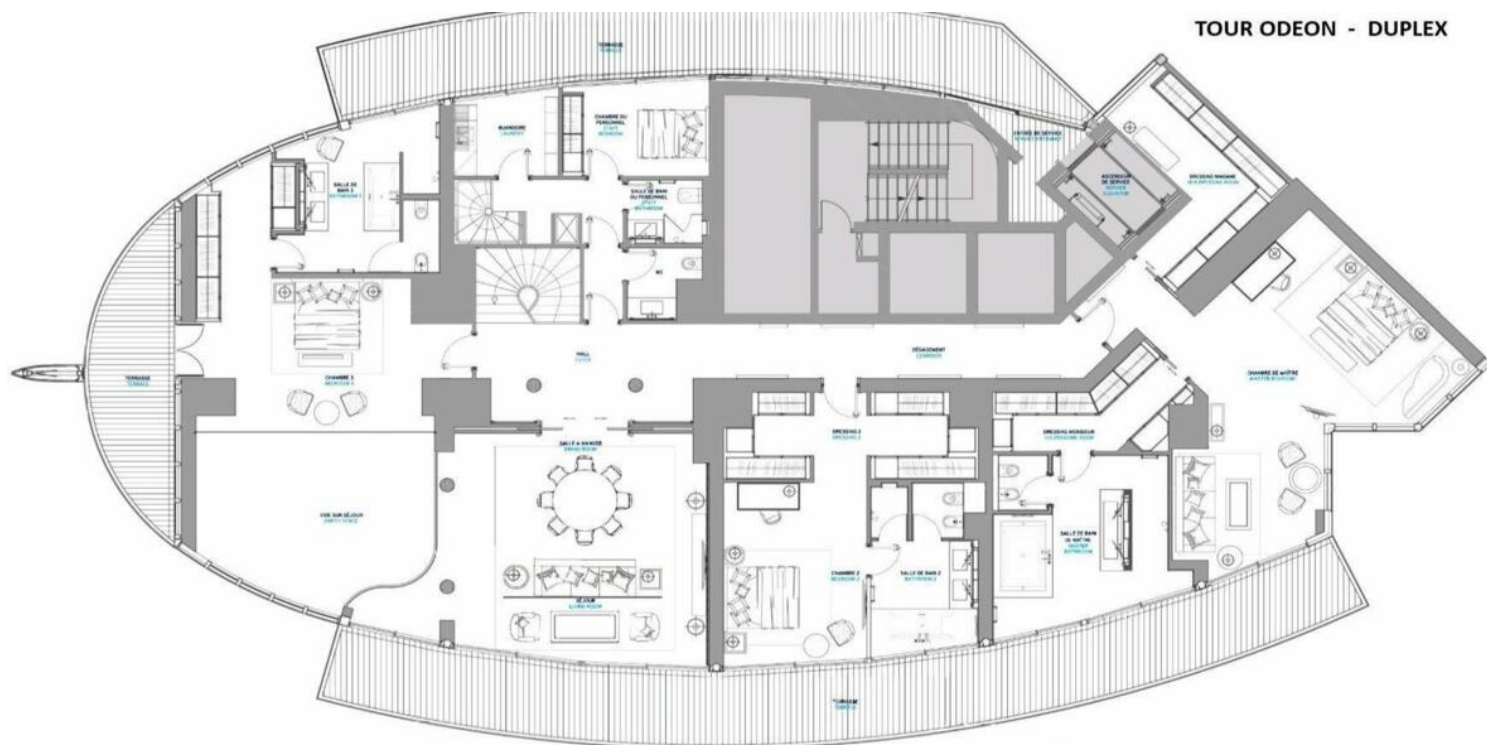
Seite  
**1/4**

Hinweis : 517V15918A68

This document does not form part of any offer or contract. All measurements, areas and distances are approximate. The information and plans contained herein are believed to be correct, however, their accuracy is not guaranteed. The photographs show only certain parts of the property at the time they were taken. This offer is subject to change of price or other conditions, without prior notice.







**TOUR ODEON - DUPLEX**

**44ème étage**



**44ème étage**  
- Intérieur : 422,80 M<sup>2</sup>  
- Terrasse : 147,80 M<sup>2</sup>

**43ème étage**  
- Intérieur : 422,80 M<sup>2</sup>  
- Terrasse : 147,70 M<sup>2</sup>  
- Palier : 34,20 M<sup>2</sup>  
**Surface totale : 1175,40 M<sup>2</sup>**

