



Verkauf

19 995 000 €

Produkttyp Villa	Zimmer 6	Gebäude Villa Stella	District Condamine
Wohnfläche 544 m²	Terrasse Fläche 267 m²	Totale Fläche 811 m²	Chambres +5
Salles de bains +5	Parkplätze 2	Stockwerk 5 étages	Zustand Neubau
Mischnutzung Ja	Verfügbar ab 2030	Hinweis Villa Olympea - Condamine	

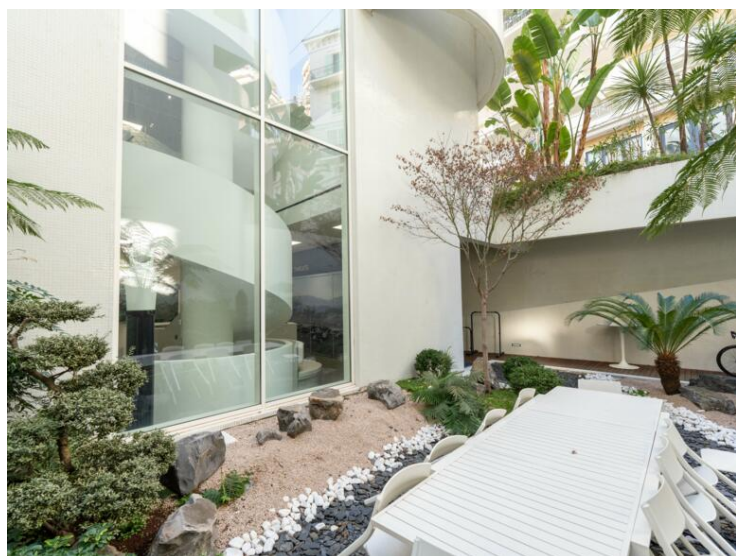


MonteCarlo-RealEstate.com

Seite
1/1

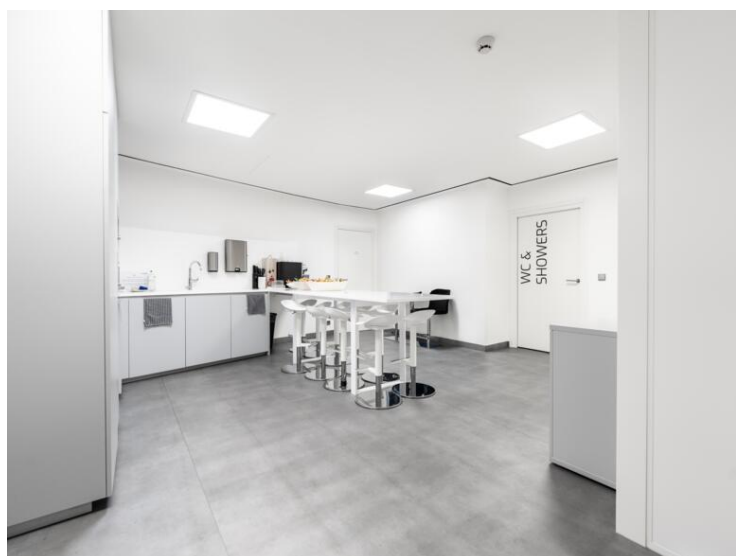
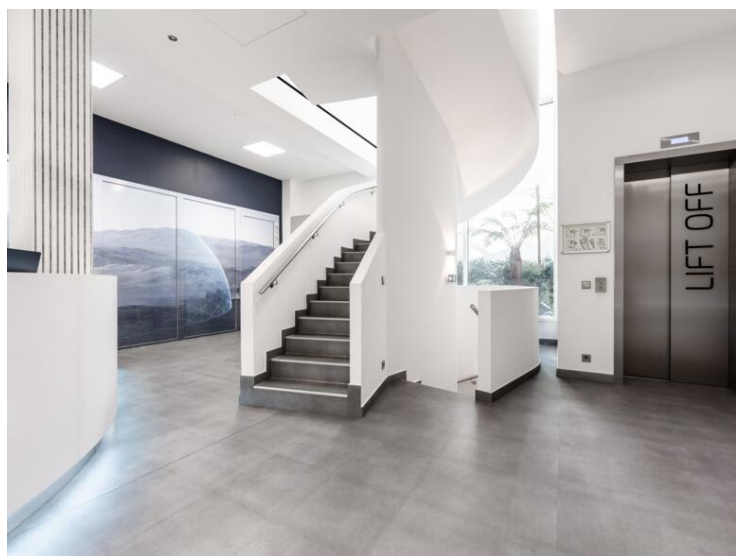
Hinweis : Villa Olympea - Condamine

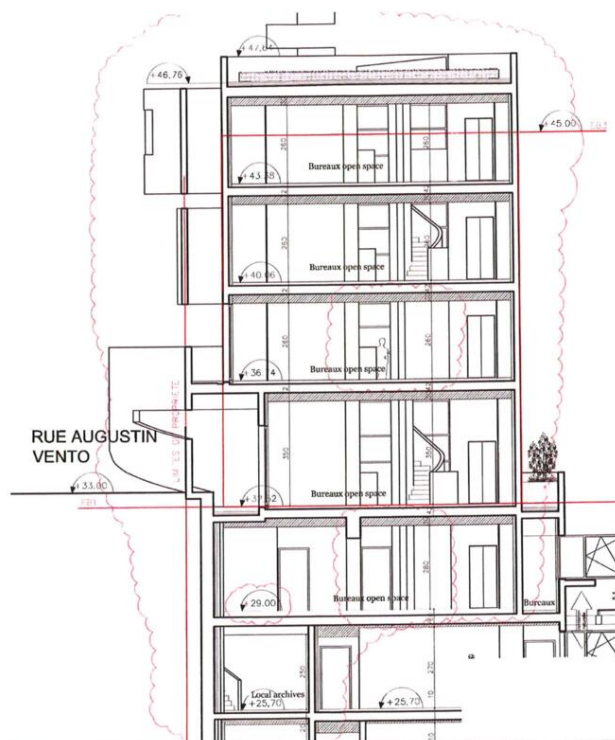
This document does not form part of any offer or contract. All measurements, areas and distances are approximate. The information and plans contained herein are believed to be correct, however, their accuracy is not guaranteed. The photographs show only certain parts of the property at the time they were taken. This offer is subject to change of price or other conditions, without prior notice.







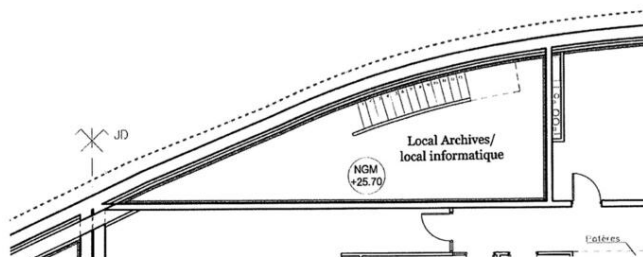




LE STELLA

Bâtiment C - Coupe C-C' - éch: 1/100e

mai 2016 P. 08



LE STELLA ETAGE 1

Bâtiment C -Local Archives - éch: 1/100e

mai 16 P. 01

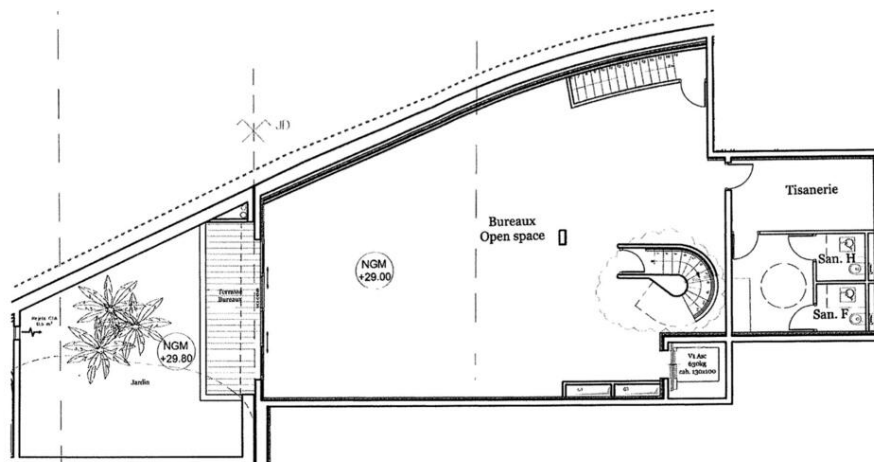


MonteCarlo-RealEstate.com

Seite
6/1

Hinweis : Villa Olympea - Condamine

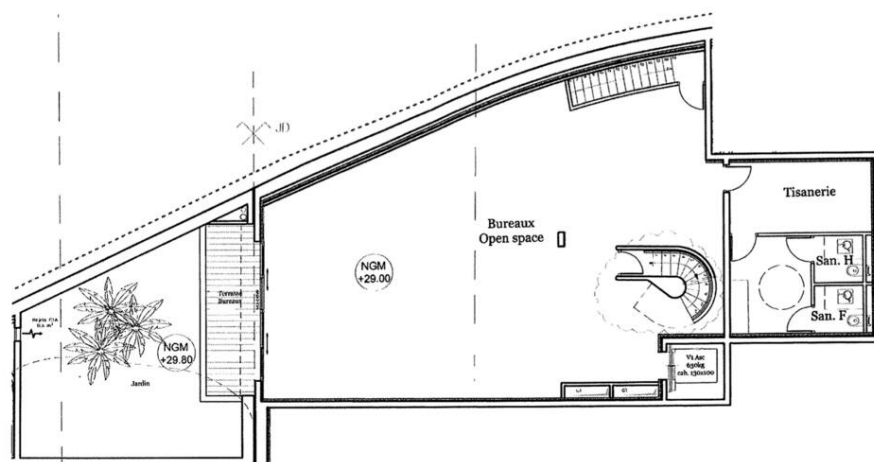
This document does not form part of any offer or contract. All measurements, areas and distances are approximate. The information and plans contained herein are believed to be correct, however, their accuracy is not guaranteed. The photographs show only certain parts of the property at the time they were taken. This offer is subject to change of price or other conditions, without prior notice.



LE STELLA ETAGE 2

Bâtiment C -Sous sol - éch: 1/100e

mai 2016 P. 02



LE STELLA ETAGE 2

Bâtiment C -Sous sol - éch: 1/100e

mai 2016 P. 02

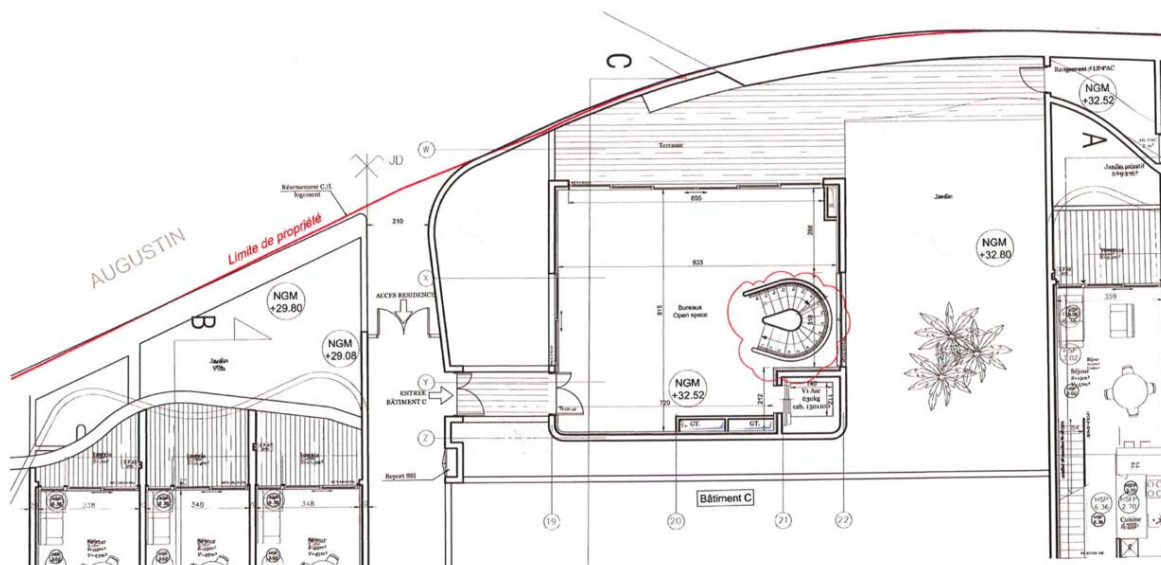


MonteCarlo-RealEstate.com

Seite
7/1

Hinweis : Villa Olympea - Condamine

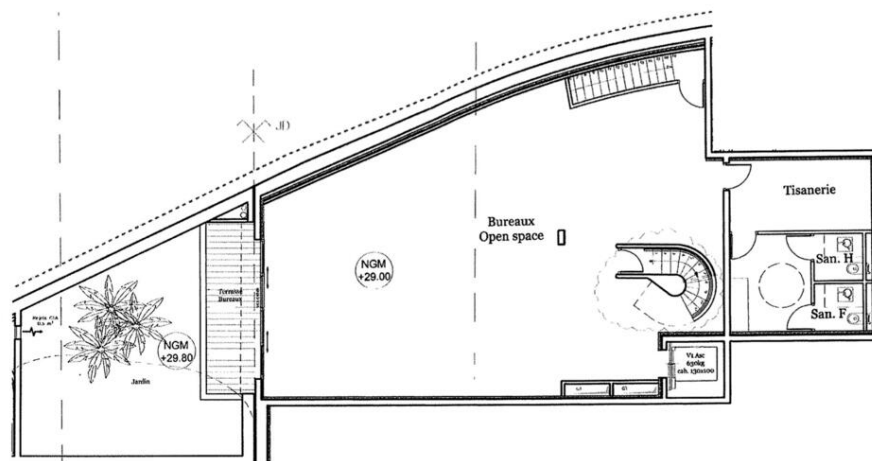
This document does not form part of any offer or contract. All measurements, areas and distances are approximate. The information and plans contained herein are believed to be correct, however, their accuracy is not guaranteed. The photographs show only certain parts of the property at the time they were taken. This offer is subject to change of price or other conditions, without prior notice.



LE STELLA ETAGE 3

Bâtiment C -Rez de chaussée - éch: 1/100e

mai 2016 P. 03

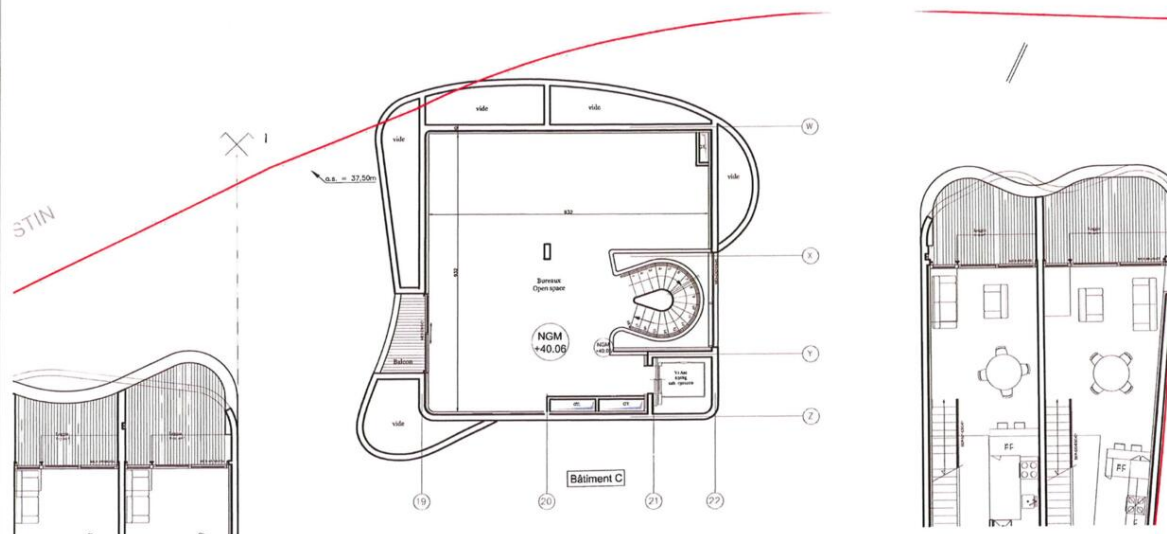


LE STELLA ETAGE 2

Bâtiment C -Sous sol - éch: 1/100e

mai 2016 P. 02

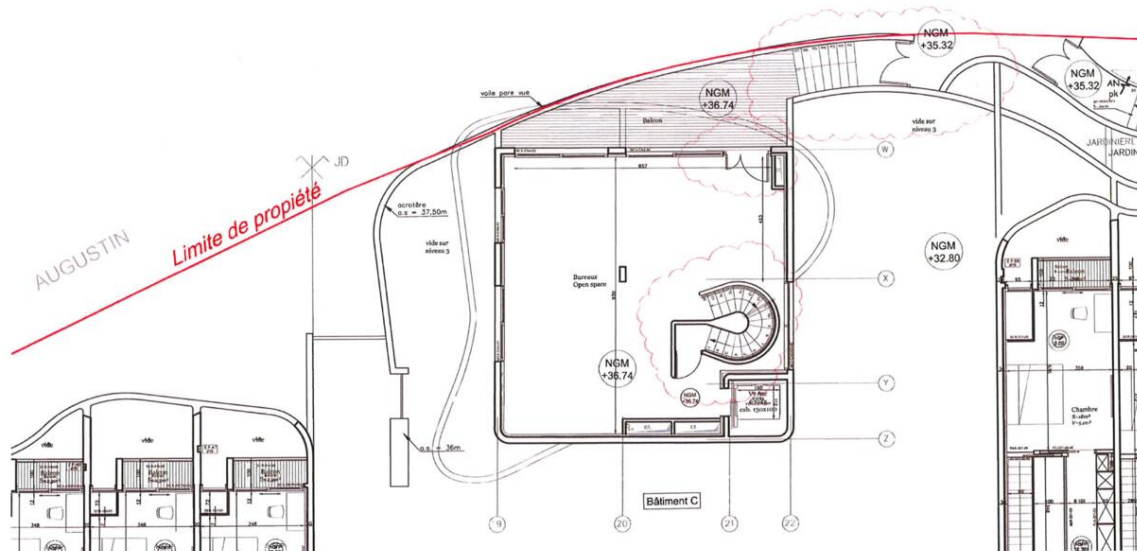




LE STELLA ETAGE 5

Bâtiment C-Etage 2 -éch: 1/100e

mai 2016 P. 05

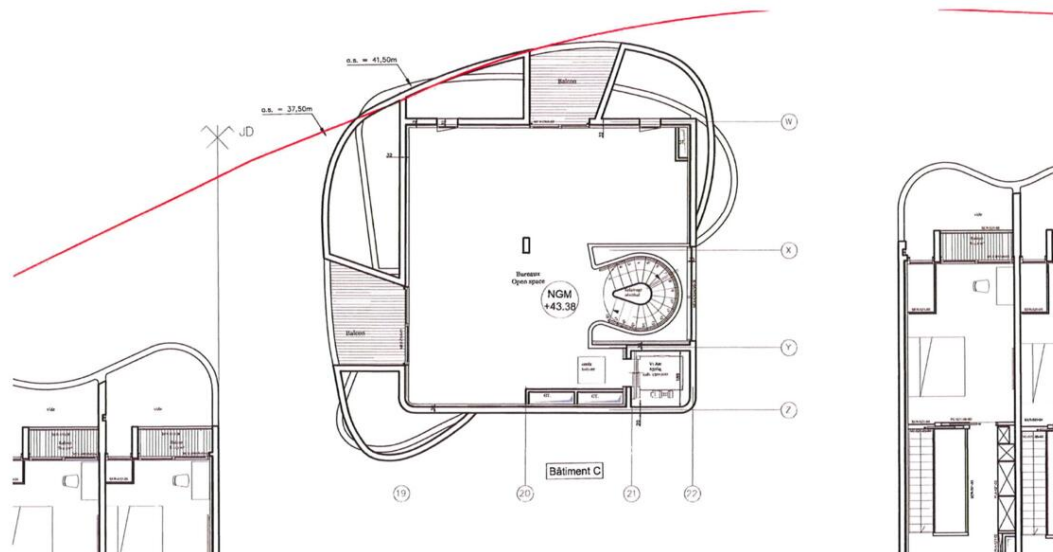


LE STELLA ETAGE 4

Bâtiment C -Etage 1-éch: 1/100e

mai 2016 P. 04

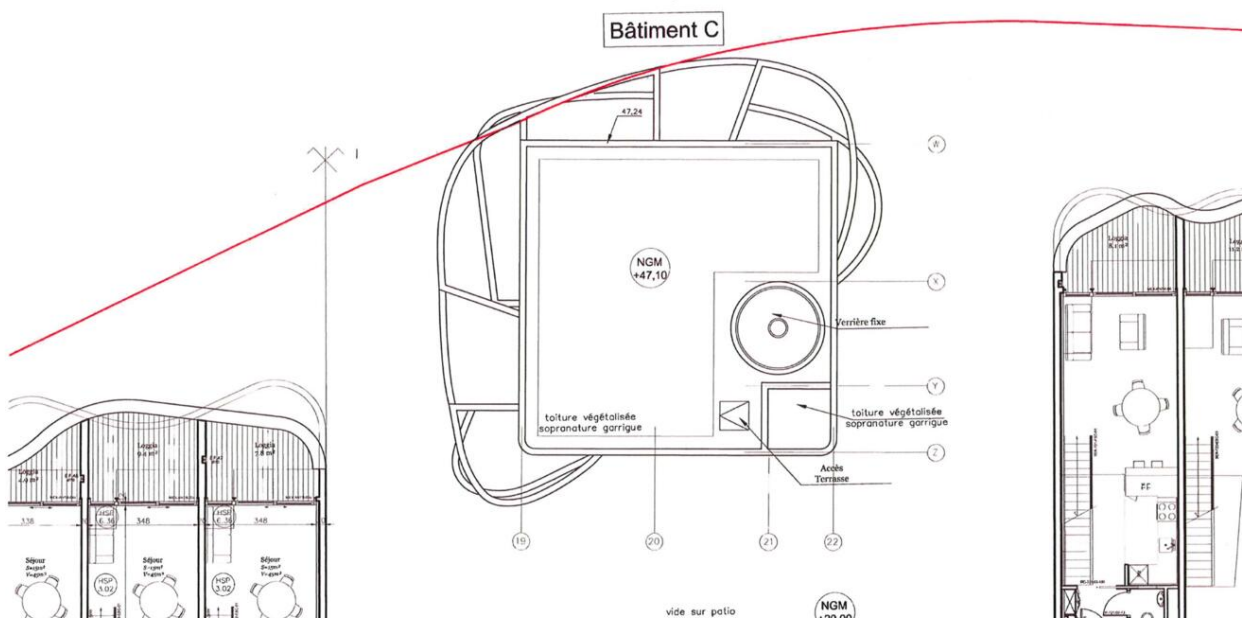




LE STELLA ETAGE 6

Bâtiment C-Etage 3 -éch: 1/100e

mai 2016 P. 06



LE STELLA ETAGE 7

Bâtiment C -Toiture-éch: 1/100e

mai 2016 P. 07



MonteCarlo-RealEstate.com

Seite
10/

Hinweis : Villa Olympea - Condamine

This document does not form part of any offer or contract. All measurements, areas and distances are approximate. The information and plans contained herein are believed to be correct, however, their accuracy is not guaranteed. The photographs show only certain parts of the property at the time they were taken. This offer is subject to change of price or other conditions, without prior notice.