



CAROLI REAL ESTATE  
GROUPE CAROLI

Caroli Real Estate

2 Rue de la Lùjernetta  
98000 Monaco

Tél : +377 93 25 51 22  
contact.carolirealestate@groupecaroli.mc  
www.caroli-realestate.com



Verkauf

6 950 000 €

<i>Produkttyp</i> <b>Wohnung</b>	<i>Zimmer</i> <b>3 Zimmer</b>	<i>Gebäude</i> <b>Château Perigord II</b>	<i>District</i> <b>La Rousse - Saint Roman</b>
<i>Terrasse Fläche</i> <b>20 m<sup>2</sup></b>	<i>Totale Fläche</i> <b>110 m<sup>2</sup></b>	<i>Schlafzimmer</i> <b>2</b>	<i>Salles de bains</i> <b>2</b>
<i>Parkplatz</i> <b>1</b>	<i>Stockwerk</i> <b>23</b>	<i>Zustand</i> <b>Renoviert</b>	<i>Meublé</i> <b>Ja</b>
<i>Blick</i> <b>Vue mer</b>	<i>Verfügbar ab</i> <b>14/05/2026</b>	<i>Hinweis</i> <b>CHP_3p</b>	



MonteCarlo-RealEstate.com

Seite  
1/4

Hinweis : CHP\_3p

This document does not form part of any offer or contract. All measurements, areas and distances are approximate. The information and plans contained herein are believed to be correct, however, their accuracy is not guaranteed. The photographs show only certain parts of the property at the time they were taken. This offer is subject to change of price or other conditions, without prior notice.



CAROLI REAL ESTATE  
GROUPE CAROLI

Caroli Real Estate

Tél : +377 93 25 51 22

contact.carolirealestate@groupecaroli.mc

www.caroli-realestate.com

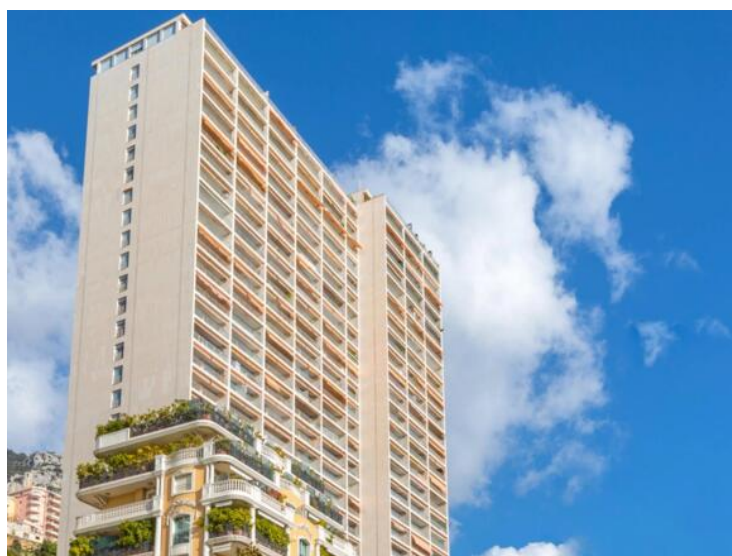


MonteCarlo-RealEstate.com

Seite  
2/4

Hinweis : CHP\_3p

This document does not form part of any offer or contract. All measurements, areas and distances are approximate. The information and plans contained herein are believed to be correct, however, their accuracy is not guaranteed. The photographs show only certain parts of the property at the time they were taken. This offer is subject to change of price or other conditions, without prior notice.

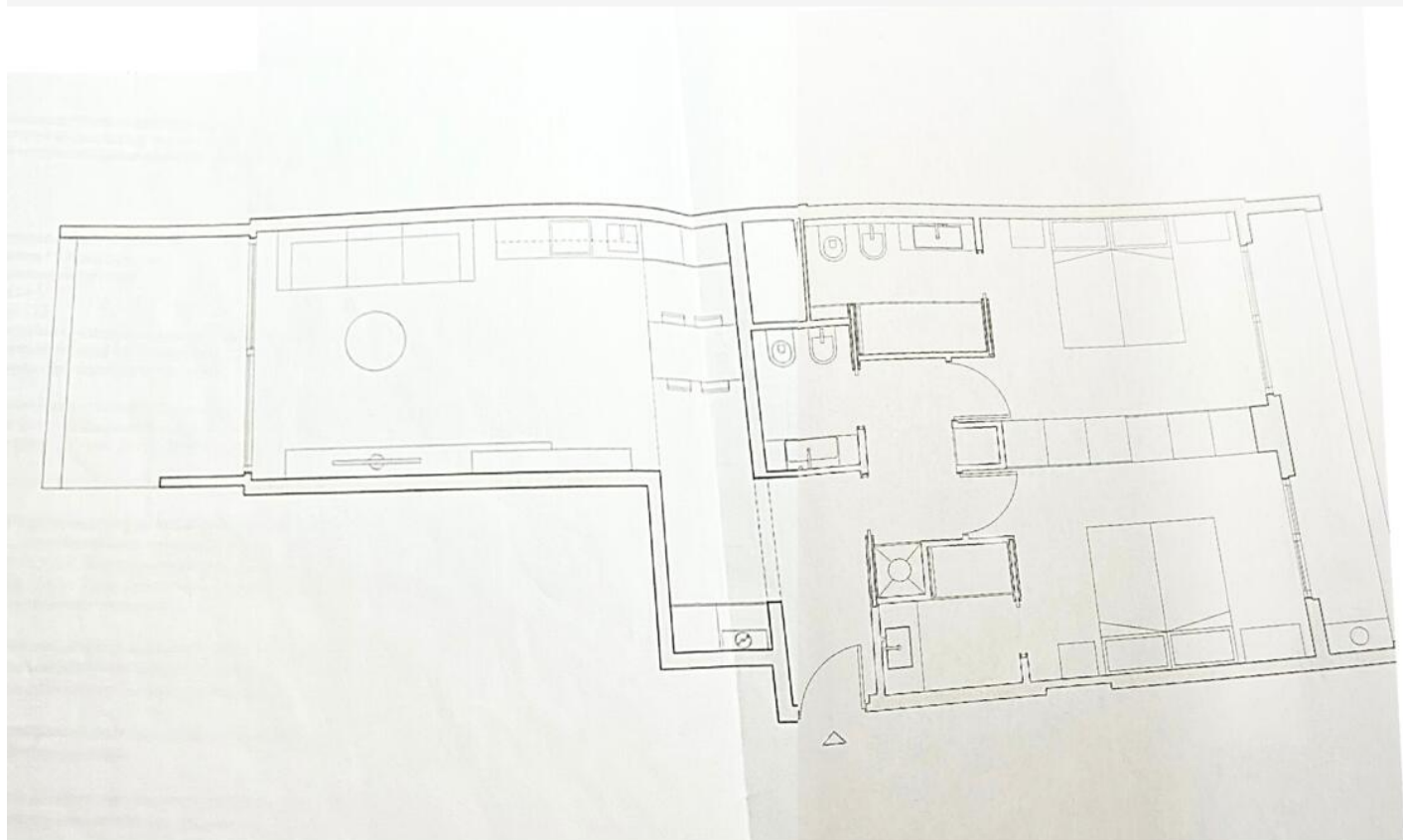




CAROLI REAL ESTATE  
GROUPE CAROLI

Caroli Real Estate

Tél : +377 93 25 51 22  
contact.carolirealestate@groupecaroli.mc  
www.caroli-realestate.com



[MonteCarlo-RealEstate.com](https://www.MonteCarlo-RealEstate.com)

Seite  
4/4

Hinweis : CHP\_3p

This document does not form part of any offer or contract. All measurements, areas and distances are approximate. The information and plans contained herein are believed to be correct, however, their accuracy is not guaranteed. The photographs show only certain parts of the property at the time they were taken. This offer is subject to change of price or other conditions, without prior notice.