



AGENCE CONTINENTALE

R E A L E S T A T E M O N A C O

Agence Continentale

19, boulevard des Moulins

98000 Monaco

Emma Ruspantini

Tél : +377 6 40 61 13 70/+377 93 50 54 64

emma@continentale.mc

www.continentale.mc



Verkauf

Exclusivité

2 200 000 €

Produkttyp Wohnung	Zimmer 2 Zimmer	Gebäude Château Amiral	District La Rousse - Saint Roman
Wohnfläche 43 m²	Terrasse Fläche 25,30 m²	Totale Fläche 68,30 m²	Chambre 1
Salle de bains 1	Parkplatz 1	Stockwerk 1	Zustand Renoviert
Mischnutzung Ja	Verfügbar ab Libre	Hinweis 2PV_Ch-Amiral_1	



MonteCarlo-RealEstate.com

Seite
1/3

Hinweis : 2PV_Ch-Amiral_1

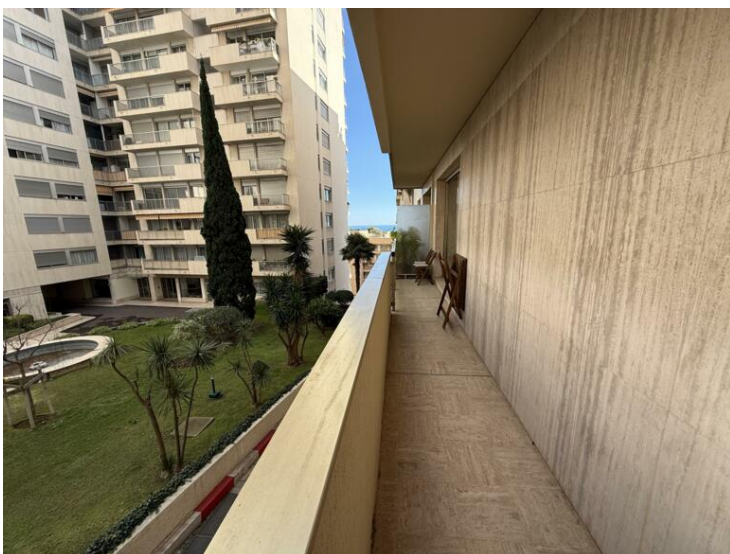
This document does not form part of any offer or contract. All measurements, areas and distances are approximate. The information and plans contained herein are believed to be correct, however, their accuracy is not guaranteed. The photographs show only certain parts of the property at the time they were taken. This offer is subject to change of price or other conditions, without prior notice.



AGENCE CONTINENTALE
REAL ESTATE MONACO

Agence Continentale

Emma Ruspantini
Tél : +377 6 40 61 13 70/+377 93 50 54 64
emma@continentale.mc
www.continentale.mc



[MonteCarlo-RealEstate.com](https://montecarlo-realestate.com)

Seite
2/3

Hinweis : 2PV_Ch-Amiral_1

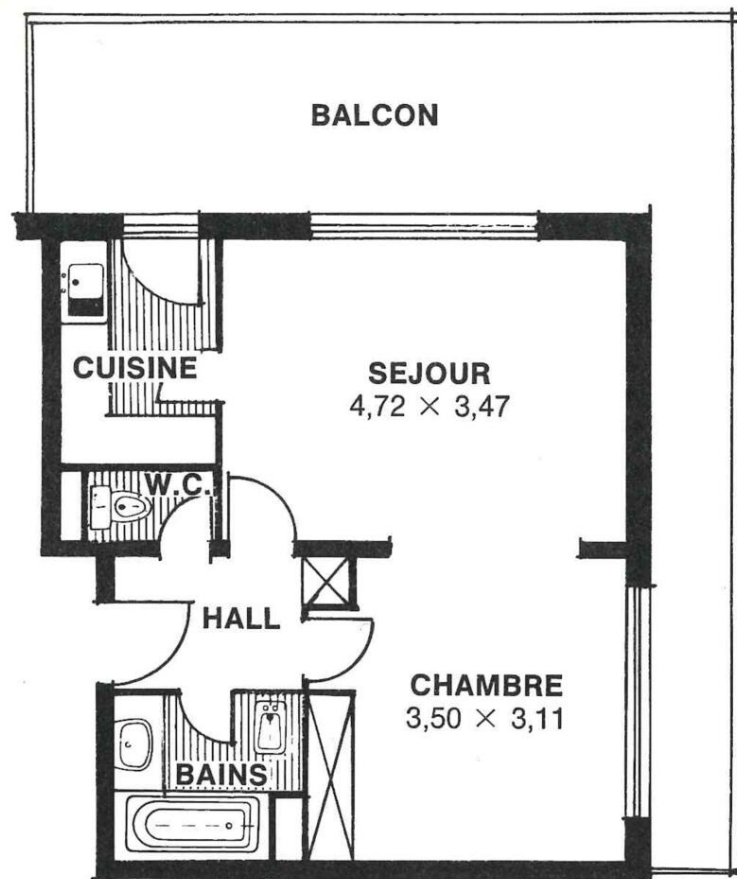
This document does not form part of any offer or contract. All measurements, areas and distances are approximate. The information and plans contained herein are believed to be correct, however, their accuracy is not guaranteed. The photographs show only certain parts of the property at the time they were taken. This offer is subject to change of price or other conditions, without prior notice.



AGENCE CONTINENTALE
REAL ESTATE MONACO

Agence Continentale

Emma Ruspantini
Tél : +377 6 40 61 13 70/+377 93 50 54 64
emma@continentale.mc
www.continentale.mc



[MonteCarlo-RealEstate.com](https://montecarlo-realestate.com)

Seite
3/3

Hinweis : 2PV_Ch-Amiral_1

This document does not form part of any offer or contract. All measurements, areas and distances are approximate. The information and plans contained herein are believed to be correct, however, their accuracy is not guaranteed. The photographs show only certain parts of the property at the time they were taken. This offer is subject to change of price or other conditions, without prior notice.