



Location meublée

40 000 € / Monat

+ Nebenkosten : 1.333 €

<i>Produkttyp</i> Wohnung	<i>Zimmer</i> 4 Zimmer	<i>Gebäude</i> Rocazur	<i>District</i> La Rousse - Saint Roman
<i>Wohnfläche</i> 196 m²	<i>Terrasse Fläche</i> 95 m²	<i>Totale Fläche</i> 291 m²	<i>Chambres</i> 3
<i>Salles de bains</i> 2	<i>Parkplätze</i> 2	<i>Keller</i> 1	<i>Nebenkosten</i> 1 333 €
<i>Zustand</i> Prestations luxueuses	<i>Meublé</i> Ja	<i>Verfügbar ab</i> Libre	<i>Hinweis</i> RCZ



MonteCarlo-RealEstate.com

Seite
1/4

Hinweis : RCZ

This document does not form part of any offer or contract. All measurements, areas and distances are approximate. The information and plans contained herein are believed to be correct, however, their accuracy is not guaranteed. The photographs show only certain parts of the property at the time they were taken. This offer is subject to change of price or other conditions, without prior notice.



CAROLI REAL ESTATE
GROUPE CAROLI

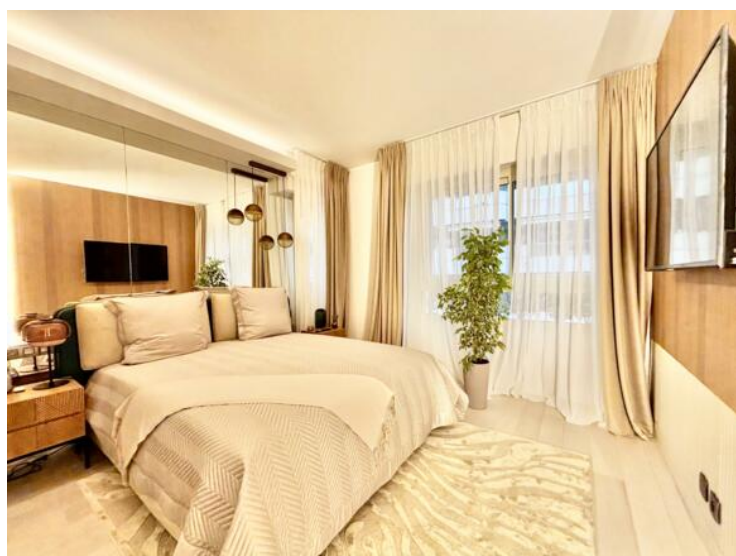
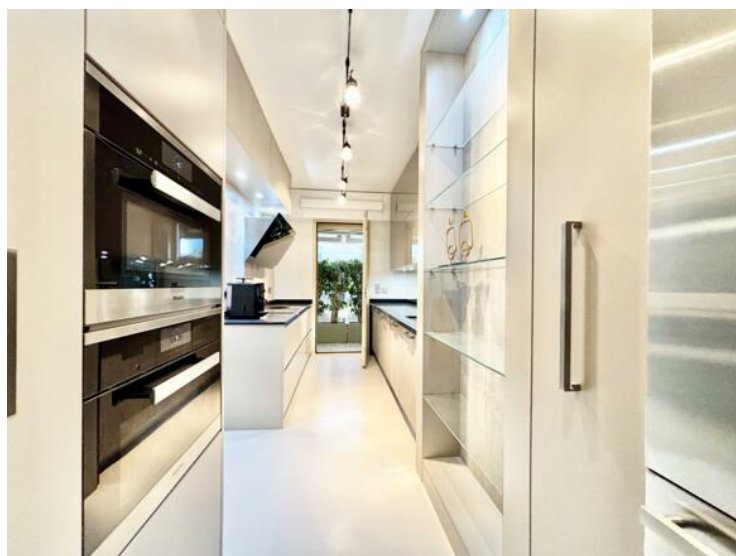
Caroli Real Estate

Tél : +377 93 25 51 22

Fax : +377 92 16 17 00

commercial.carolirealestate@groupecaroli.mc

www.caroli-realestate.com



MonteCarlo-RealEstate.com

Seite
2/4

Hinweis : RCZ

This document does not form part of any offer or contract. All measurements, areas and distances are approximate. The information and plans contained herein are believed to be correct, however, their accuracy is not guaranteed. The photographs show only certain parts of the property at the time they were taken. This offer is subject to change of price or other conditions, without prior notice.



CAROLI REAL ESTATE
GROUPE CAROLI

Caroli Real Estate

Tél : +377 93 25 51 22

Fax : +377 92 16 17 00

commercial.carolirealestate@groupecaroli.mc

www.caroli-realestate.com



MonteCarlo-RealEstate.com

Seite
3/4

Hinweis : RCZ

This document does not form part of any offer or contract. All measurements, areas and distances are approximate. The information and plans contained herein are believed to be correct, however, their accuracy is not guaranteed. The photographs show only certain parts of the property at the time they were taken. This offer is subject to change of price or other conditions, without prior notice.

