



AGENCE CONTINENTALE

R E A L E S T A T E M O N A C O

Agence Continentale

19, boulevard des Moulins

98000 Monaco

Emma Ruspantini

Tél : +377 6 40 61 13 70/+377 93 50 54 64

emma@continentale.mc

www.continentale.mc



Vermietung

3 000 € / Monat
(Einschließlich Nebenkosten)

<i>Produkttyp</i> Wohnung	<i>Zimmer</i> 2 Zimmer	<i>Gebäude</i> Villa Hollandia	<i>District</i> Monte-Carlo
<i>Wohnfläche</i> 59 m²	<i>Schlafzimmer</i> 1	<i>Salle de bains</i> 1	<i>Keller</i> 1
<i>Stockwerk</i> 1er étage	<i>Zustand</i> Gutem Zustand	<i>Verfügbar ab</i> Libre d'occupation	<i>Lois</i> Aucune loi
<i>Hinweis</i> AC-location			



MonteCarlo-RealEstate.com

Seite
1/4

Hinweis : AC-location

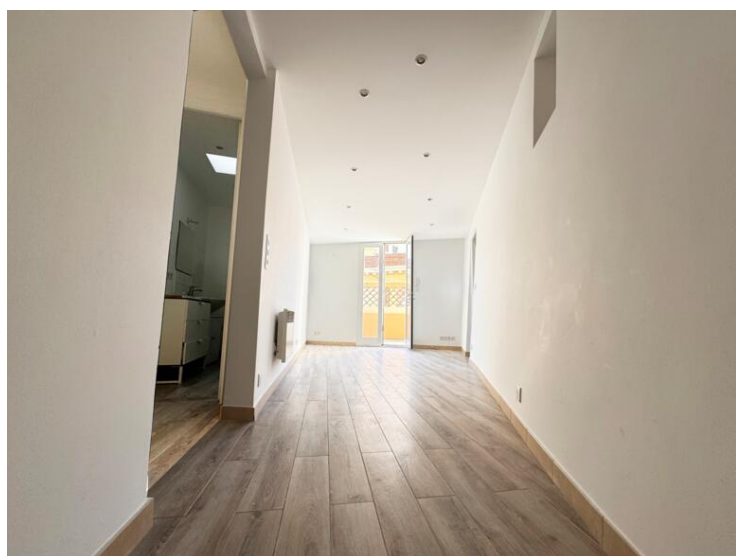
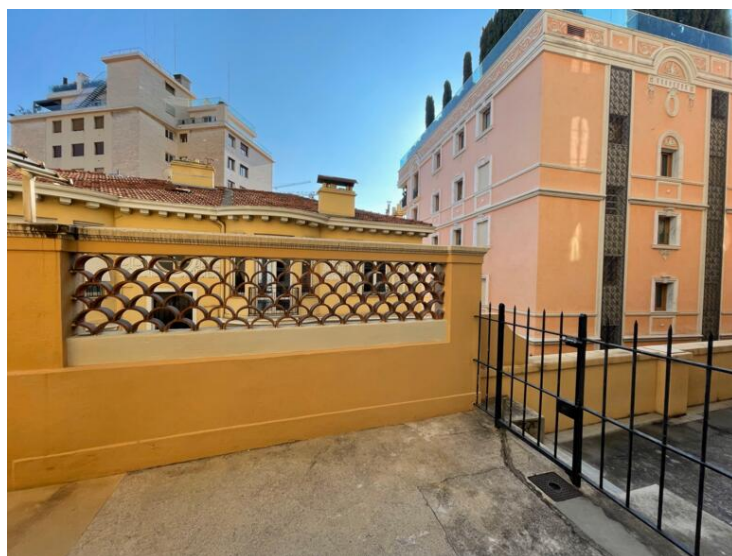
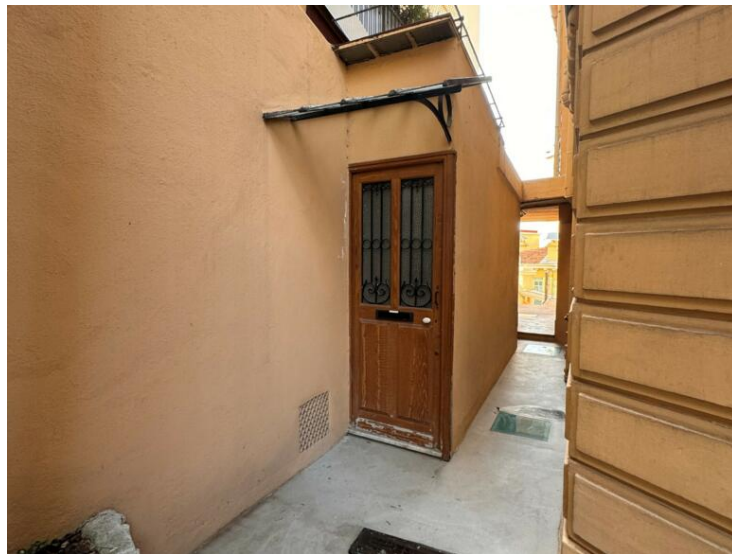
This document does not form part of any offer or contract. All measurements, areas and distances are approximate. The information and plans contained herein are believed to be correct, however, their accuracy is not guaranteed. The photographs show only certain parts of the property at the time they were taken. This offer is subject to change of price or other conditions, without prior notice.



AGENCE CONTINENTALE
REAL ESTATE MONACO

Agence Continentale

Emma Ruspantini
Tél : +377 6 40 61 13 70/+377 93 50 54 64
emma@continentale.mc
www.continentale.mc



[MonteCarlo-RealEstate.com](https://montecarlo-realestate.com)

Seite
2/4

Hinweis : AC-location

This document does not form part of any offer or contract. All measurements, areas and distances are approximate. The information and plans contained herein are believed to be correct, however, their accuracy is not guaranteed. The photographs show only certain parts of the property at the time they were taken. This offer is subject to change of price or other conditions, without prior notice.

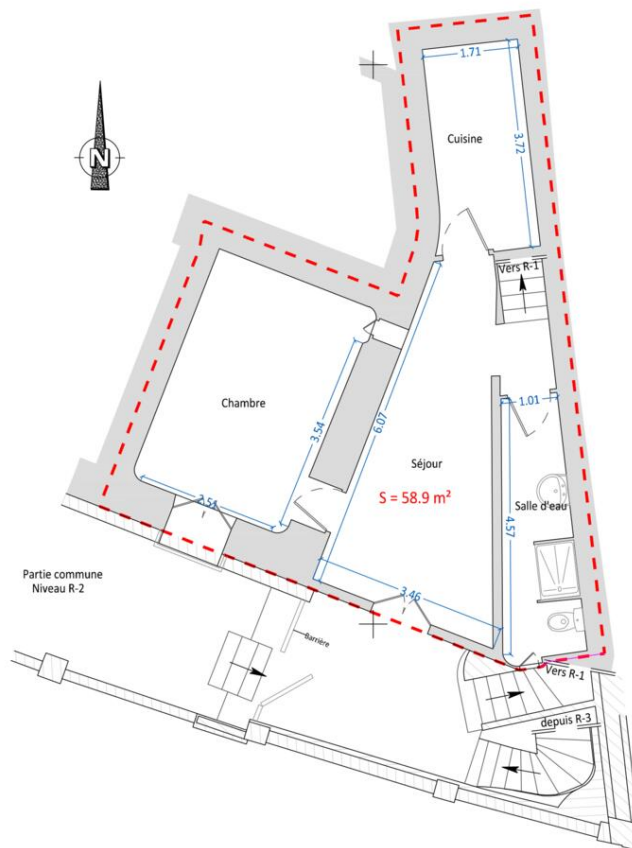




AGENCE CONTINENTALE
REAL ESTATE MONACO

Agence Continentale

Emma Ruspantini
Tél : +377 6 40 61 13 70/+377 93 50 54 64
emma@continentale.mc
www.continentale.mc



[MonteCarlo-RealEstate.com](https://montecarlo-realestate.com)

Seite
4/4

Hinweis : AC-location

This document does not form part of any offer or contract. All measurements, areas and distances are approximate. The information and plans contained herein are believed to be correct, however, their accuracy is not guaranteed. The photographs show only certain parts of the property at the time they were taken. This offer is subject to change of price or other conditions, without prior notice.