



CAROLI REAL ESTATE
GROUPE CAROLI

Caroli Real Estate

27, boulevard d'Italie
98000 Monaco

Tél : +377 93 25 51 22

Fax : +377 92 16 17 00

contact.carolirealestate@groupecaroli.mc

www.caroli-realestate.com



Vermietung

Exclusivité

8 000 € / Monat

+ Nebenkosten : 600 €

Produkttyp
Duplex

Zimmer
2 Zimmer

Gebäude
Parc Saint Roman

District
La Rousse - Saint Roman

Wohnfläche
90 m²

Terrasse Fläche
10 m²

Totale Fläche
100 m²

Schlafzimmer
1

Parkplatz
1

Keller
1

Nebenkosten
600 €

Zustand
Renoviert

Verfügbar ab
15/05/2026

Hinweis
PSR-L2P



MonteCarlo-RealEstate.com

Seite
1/5

Hinweis : PSR-L2P

This document does not form part of any offer or contract. All measurements, areas and distances are approximate. The information and plans contained herein are believed to be correct, however, their accuracy is not guaranteed. The photographs show only certain parts of the property at the time they were taken. This offer is subject to change of price or other conditions, without prior notice.



CAROLI REAL ESTATE
GROUPE CAROLI

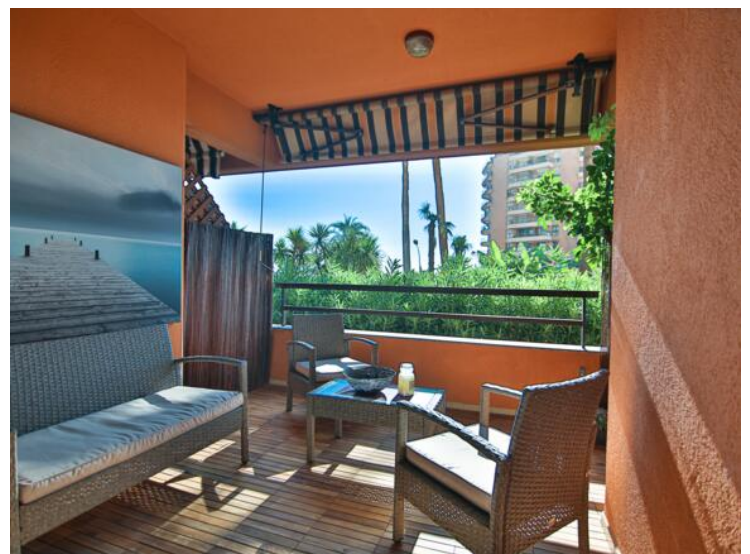
Caroli Real Estate

Tél : +377 93 25 51 22

Fax : +377 92 16 17 00

contact.carolirealestate@groupecaroli.mc

www.caroli-realestate.com



MonteCarlo-RealEstate.com

Seite
2/5

Hinweis : PSR-L2P

This document does not form part of any offer or contract. All measurements, areas and distances are approximate. The information and plans contained herein are believed to be correct, however, their accuracy is not guaranteed. The photographs show only certain parts of the property at the time they were taken. This offer is subject to change of price or other conditions, without prior notice.



CAROLI REAL ESTATE
GROUPE CAROLI

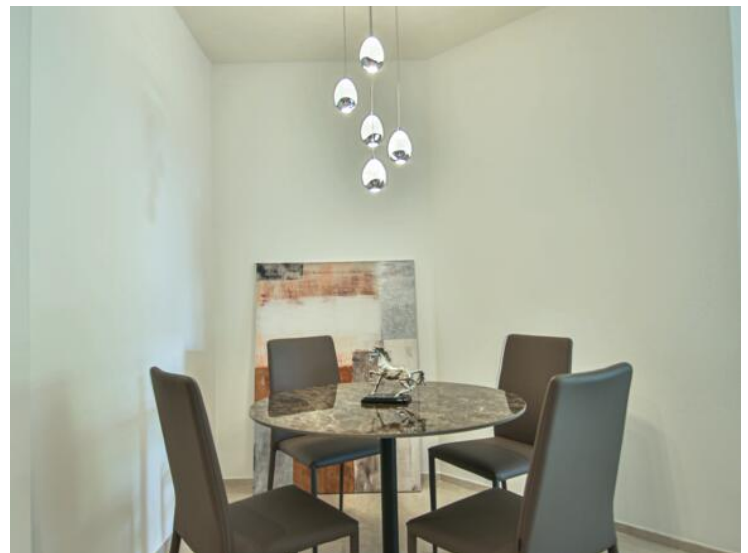
Caroli Real Estate

Tél : +377 93 25 51 22

Fax : +377 92 16 17 00

contact.carolirealestate@groupecaroli.mc

www.caroli-realestate.com



MonteCarlo-RealEstate.com

Seite
3/5

Hinweis : PSR-L2P

This document does not form part of any offer or contract. All measurements, areas and distances are approximate. The information and plans contained herein are believed to be correct, however, their accuracy is not guaranteed. The photographs show only certain parts of the property at the time they were taken. This offer is subject to change of price or other conditions, without prior notice.



CAROLI REAL ESTATE
GROUPE CAROLI

Caroli Real Estate

Tél : +377 93 25 51 22

Fax : +377 92 16 17 00

contact.carolirealestate@groupecaroli.mc

www.caroli-realestate.com



MonteCarlo-RealEstate.com

Seite
4/5

Hinweis : PSR-L2P

This document does not form part of any offer or contract. All measurements, areas and distances are approximate. The information and plans contained herein are believed to be correct, however, their accuracy is not guaranteed. The photographs show only certain parts of the property at the time they were taken. This offer is subject to change of price or other conditions, without prior notice.



CAROLI REAL ESTATE
GROUPE CAROLI

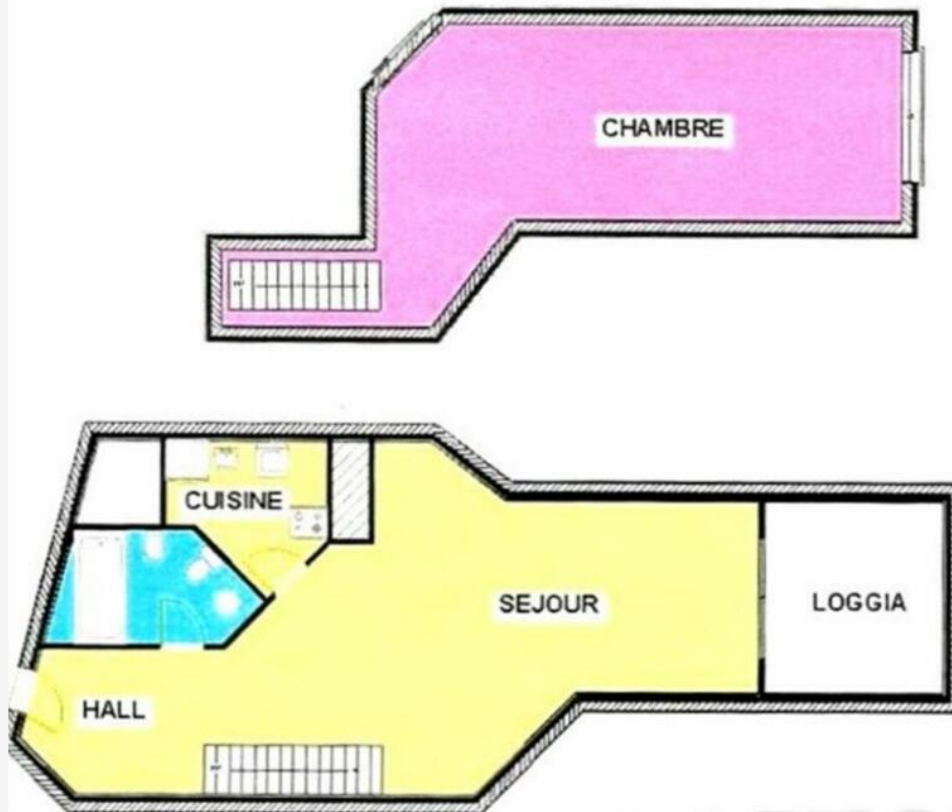
Caroli Real Estate

Tél : +377 93 25 51 22

Fax : +377 92 16 17 00

contact.carolirealestate@groupecaroli.mc

www.caroli-realestate.com



MonteCarlo-RealEstate.com

Seite
5/5

Hinweis : PSR-L2P

This document does not form part of any offer or contract. All measurements, areas and distances are approximate. The information and plans contained herein are believed to be correct, however, their accuracy is not guaranteed. The photographs show only certain parts of the property at the time they were taken. This offer is subject to change of price or other conditions, without prior notice.