



**AGENCE CONTINENTALE**

R E A L E S T A T E M O N A C O

**Agence Continentale**

19, boulevard des Moulins

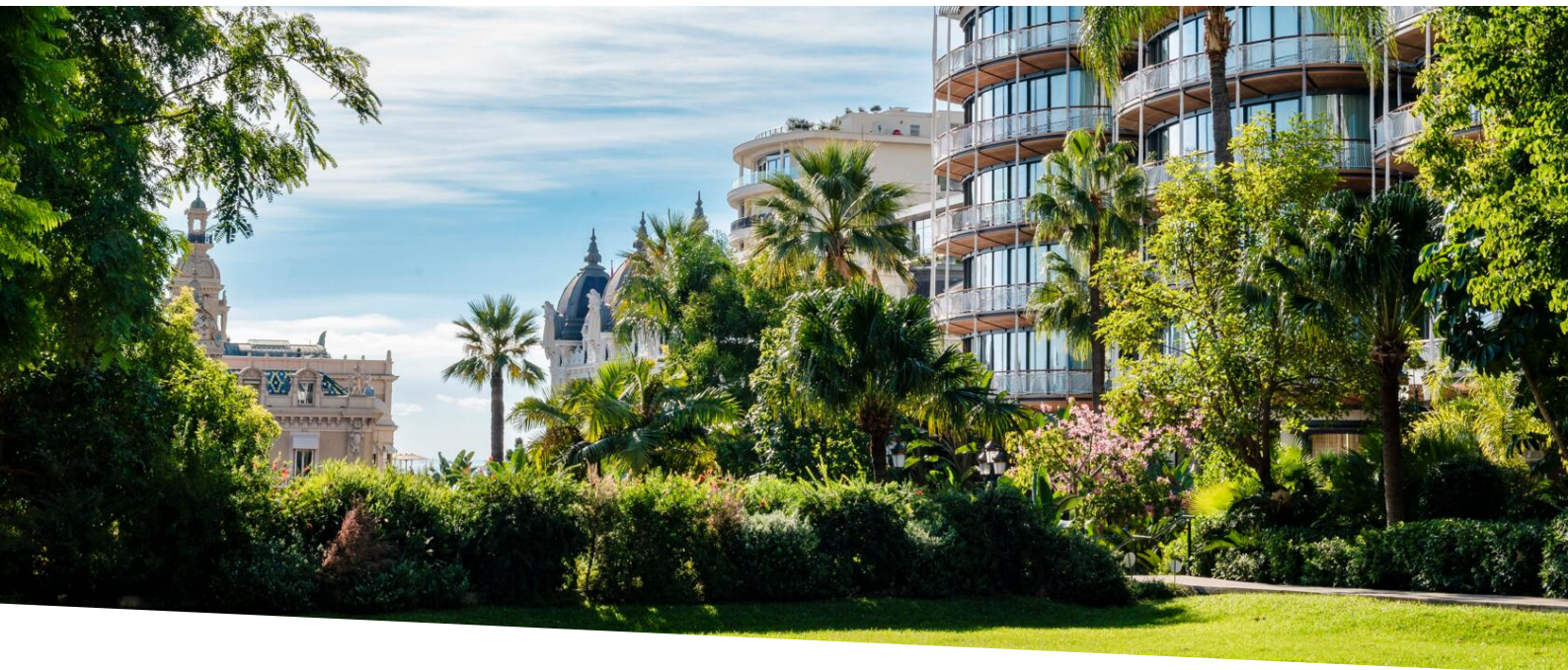
98000 Monaco

Emma Ruspantini

Tél : +377 6 40 61 13 70/+377 93 50 54 64

emma@continentale.mc

www.continentale.mc



**Vermietung**

**110 000 € / Monat**

|  |   |  |                                      |
|--|---|--|--------------------------------------|
| <i>Produkttyp</i><br><b>Wohnung</b>            | <i>Zimmer</i><br><b>2 Zimmer</b>                  | <i>Gebäude</i><br><b>One Monte-Carlo</b>         | <i>District</i><br><b>Carré d'Or</b> |
| <i>Wohnfläche</i><br><b>298 m<sup>2</sup></b>  | <i>Terrasse Fläche</i><br><b>78 m<sup>2</sup></b> | <i>Totale Fläche</i><br><b>376 m<sup>2</sup></b> | <i>Schlafzimmer</i><br><b>2</b>      |
| <i>Salles de bains</i><br><b>2</b>             | <i>Parkplätze</i><br><b>2</b>                     | <i>Keller</i><br><b>1</b>                        | <i>Stockwerk</i><br><b>8</b>         |
| <i>Zustand</i><br><b>Prestations luxueuses</b> | <i>Verfügbar ab</i><br><b>octobre 2026</b>        | <i>Hinweis</i><br><b>2PL_ONE-B10</b>             |                                      |



[MonteCarlo-RealEstate.com](https://MonteCarlo-RealEstate.com)

Seite  
**1/2**

Hinweis : 2PL\_ONE-B10

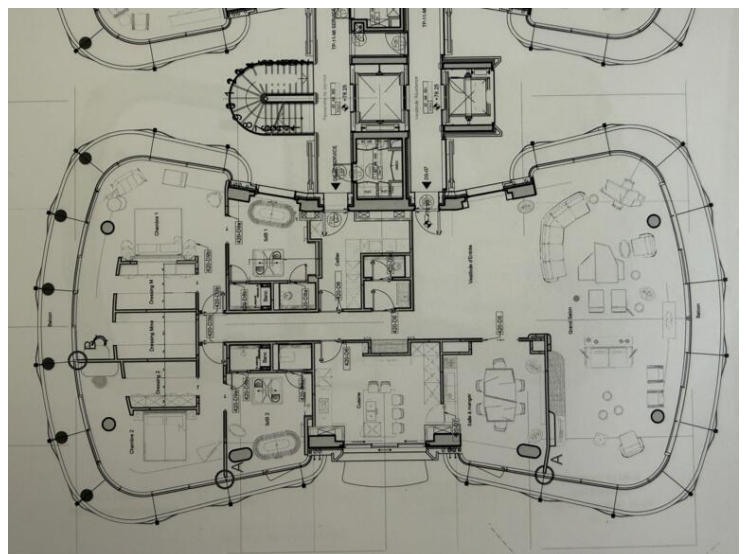
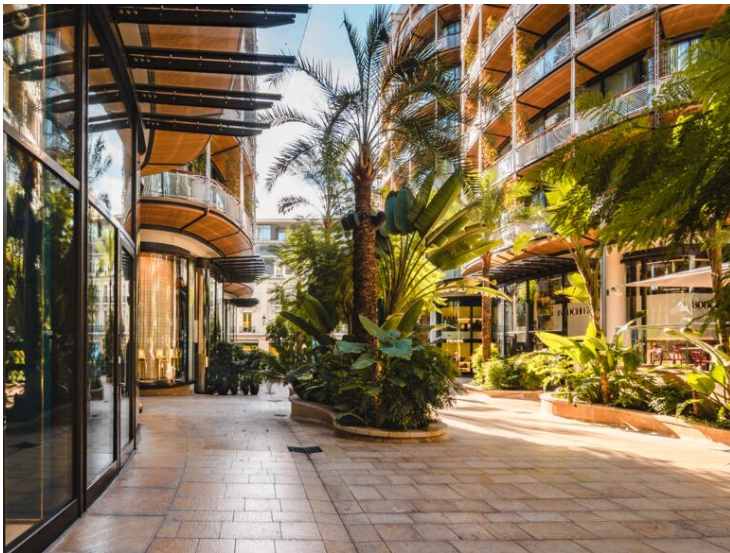
This document does not form part of any offer or contract. All measurements, areas and distances are approximate. The information and plans contained herein are believed to be correct, however, their accuracy is not guaranteed. The photographs show only certain parts of the property at the time they were taken. This offer is subject to change of price or other conditions, without prior notice.



**AGENCE CONTINENTALE**  
REAL ESTATE MONACO

**Agence Continentale**

Emma Ruspantini  
Tél : +377 6 40 61 13 70/+377 93 50 54 64  
emma@continentale.mc  
www.continentale.mc



[MonteCarlo-RealEstate.com](https://MonteCarlo-RealEstate.com)

Seite  
**2/2**

Hinweis : 2PL\_ONE-B10

This document does not form part of any offer or contract. All measurements, areas and distances are approximate. The information and plans contained herein are believed to be correct, however, their accuracy is not guaranteed. The photographs show only certain parts of the property at the time they were taken. This offer is subject to change of price or other conditions, without prior notice.