



AGENCE CONTINENTALE

R E A L E S T A T E M O N A C O

Agence Continentale

19, boulevard des Moulins

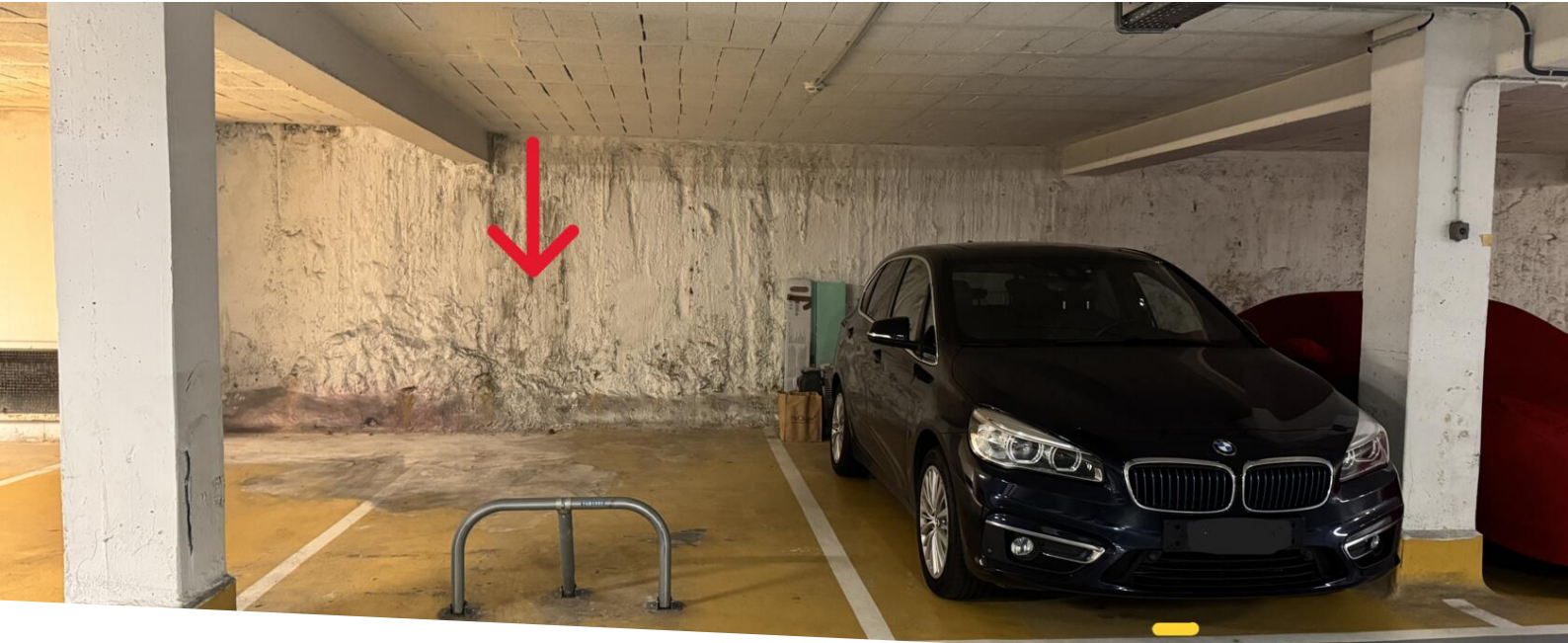
98000 Monaco

Emma Ruspantini

Tél : +377 6 40 61 13 70/+377 93 50 54 64

emma@continentale.mc

www.continentale.mc



Vermietung

Exclusivité

450 € / Monat

Produkttyp
Parkplatz

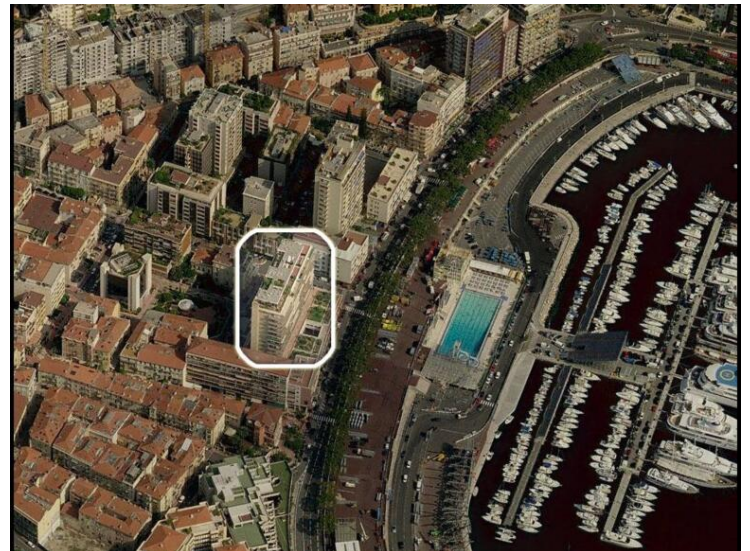
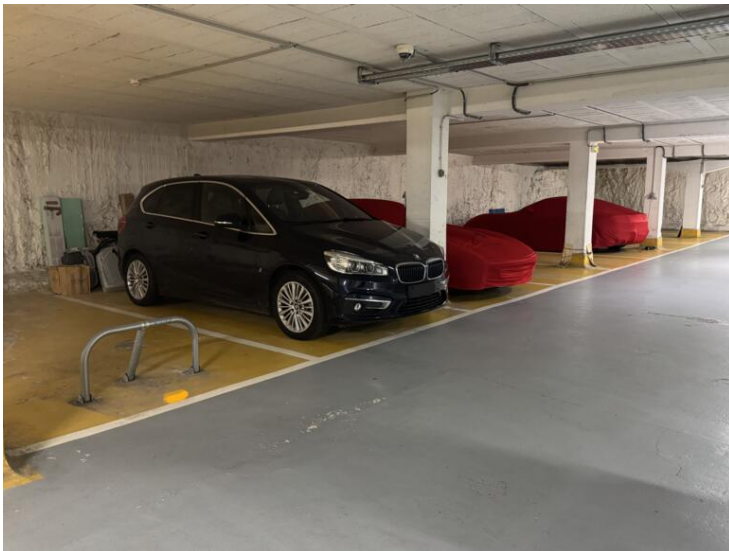
Gebäude
Shangri-La

District
Port

Parkplatz
1

Verfügbar ab
Libre

Hinweis
Pkg_Shangri-la



MonteCarlo-RealEstate.com

Seite
1/1

Hinweis : Pkg_Shangri-la

This document does not form part of any offer or contract. All measurements, areas and distances are approximate. The information and plans contained herein are believed to be correct, however, their accuracy is not guaranteed. The photographs show only certain parts of the property at the time they were taken. This offer is subject to change of price or other conditions, without prior notice.