



JOHN TAYLOR

LUXURY REAL ESTATE SINCE 1864

John Taylor

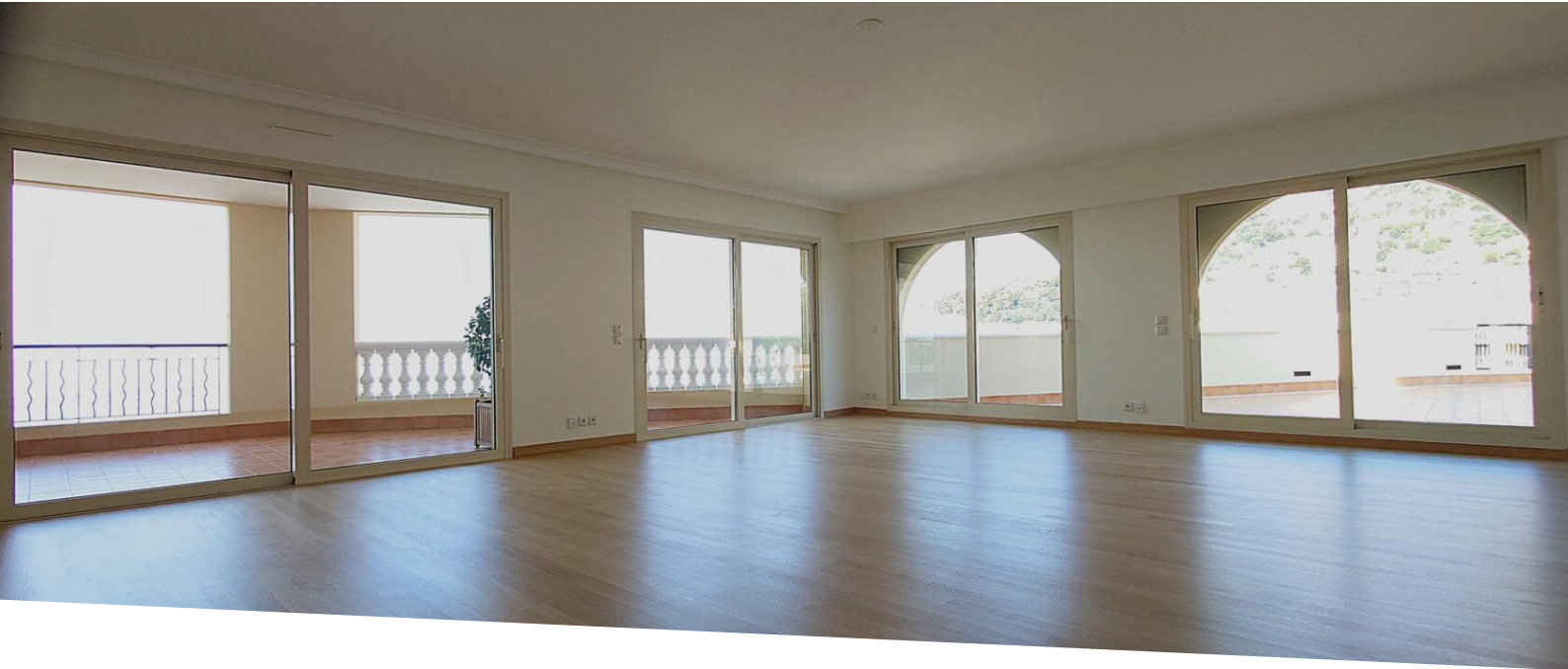
20, boulevard des Moulins
98000 Monaco

Jean-Yves LE GRAVEREND

Tél : +377 6 07 93 46 21/+377 93 50 30 70

jylg@john-taylor.com

www.john-taylor.fr/agence-immobiliere-de-prestige/monaco



Vermietung

Miete auf Anfrage

<i>Produkttyp</i> Wohnung	<i>Zimmer</i> +5 Zimmer	<i>Gebäude</i> Memmo Center	<i>District</i> Fontvieille
<i>Wohnfläche</i> 366 m²	<i>Terrasse Fläche</i> 336 m²	<i>Totale Fläche</i> 702 m²	<i>Schlafzimmer</i> 5
<i>Salles de bains</i> 5	<i>Parkplätze</i> 4	<i>Keller</i> 1	<i>Stockwerk</i> 9ème
<i>Blick</i> Vue mer,Vue dégagée	<i>Hinweis</i> V1926MC		



MonteCarlo-RealEstate.com

Seite
1/3

Hinweis : V1926MC

This document does not form part of any offer or contract. All measurements, areas and distances are approximate. The information and plans contained herein are believed to be correct, however, their accuracy is not guaranteed. The photographs show only certain parts of the property at the time they were taken. This offer is subject to change of price or other conditions, without prior notice.



JOHN TAYLOR

LUXURY REAL ESTATE SINCE 1864

John Taylor

Jean-Yves LE GRAVEREND

Tél : +377 6 07 93 46 21/+377 93 50 30 70

jylg@john-taylor.com

www.john-taylor.fr/agence-immobiliere-de-prestige/monaco



MonteCarlo-RealEstate.com

Seite 2/3

Hinweis : V1926MC

This document does not form part of any offer or contract. All measurements, areas and distances are approximate. The information and plans contained herein are believed to be correct, however, their accuracy is not guaranteed. The photographs show only certain parts of the property at the time they were taken. This offer is subject to change of price or other conditions, without prior notice.



JOHN TAYLOR

LUXURY REAL ESTATE SINCE 1864

John Taylor

Jean-Yves LE GRAVEREND

Tél : +377 6 07 93 46 21/+377 93 50 30 70

jylg@john-taylor.com

www.john-taylor.fr/agence-immobiliere-de-prestige/monaco



MonteCarlo-RealEstate.com

Seite
3/3

Hinweis : V1926MC

This document does not form part of any offer or contract. All measurements, areas and distances are approximate. The information and plans contained herein are believed to be correct, however, their accuracy is not guaranteed. The photographs show only certain parts of the property at the time they were taken. This offer is subject to change of price or other conditions, without prior notice.