



JOHN TAYLOR

LUXURY REAL ESTATE SINCE 1864

John Taylor

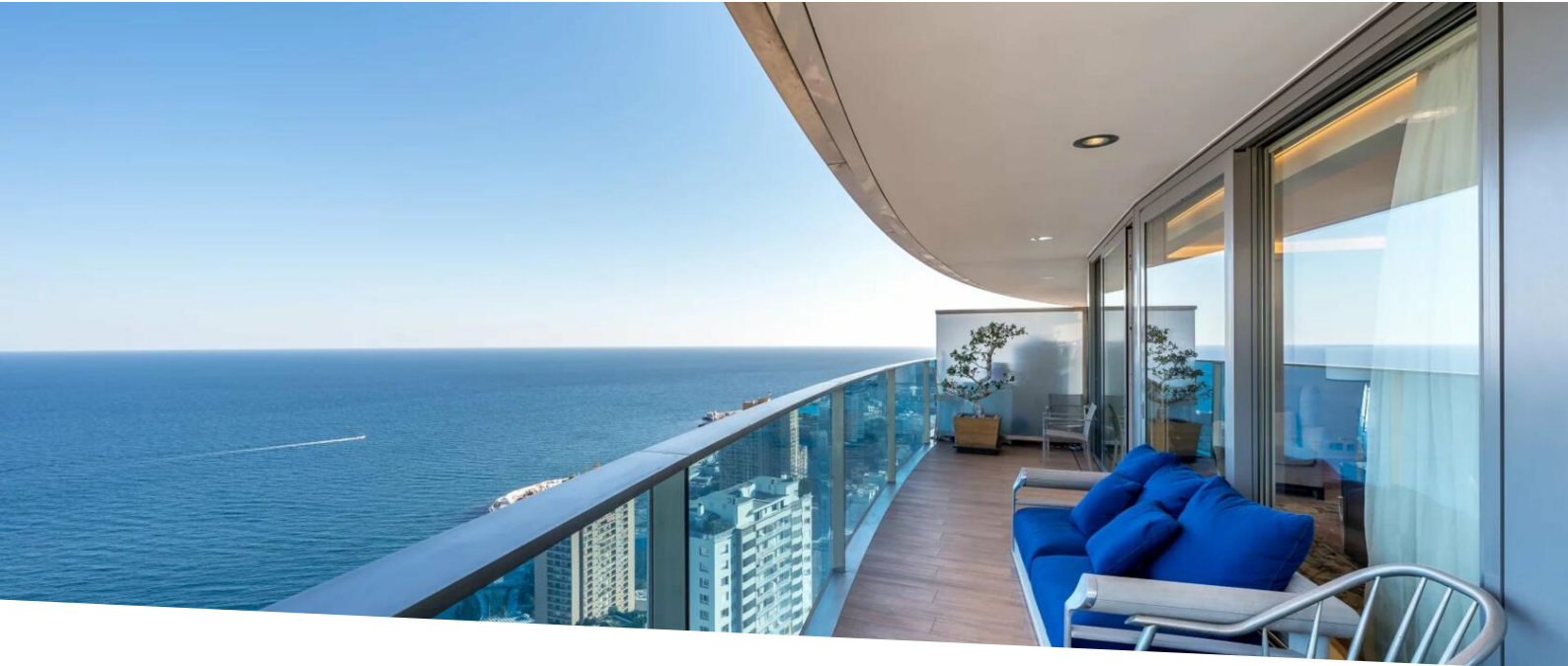
20, boulevard des Moulins
98000 Monaco

Jean-Yves LE GRAVEREND

Tél : +377 6 07 93 46 21/+377 93 50 30 70

jylg@john-taylor.com

www.john-taylor.fr/agence-immobiliere-de-prestige/monaco



Vermietung

Miete auf Anfrage

<i>Produkttyp</i> Wohnung	<i>Zimmer</i> 5 Zimmer	<i>Gebäude</i> Tour Odéon	<i>District</i> La Rousse - Saint Roman
<i>Wohnfläche</i> 246 m²	<i>Terrasse Fläche</i> 103 m²	<i>Totale Fläche</i> 349 m²	<i>Schlafzimmer</i> 4
<i>Salles de bains</i> 4	<i>Parkplätze</i> 3	<i>Keller</i> 1	<i>Nebenkosten</i> 6 000 €
<i>Zustand</i> Très bon état	<i>Blick</i> Vue mer	<i>Hinweis</i> L1329MC	

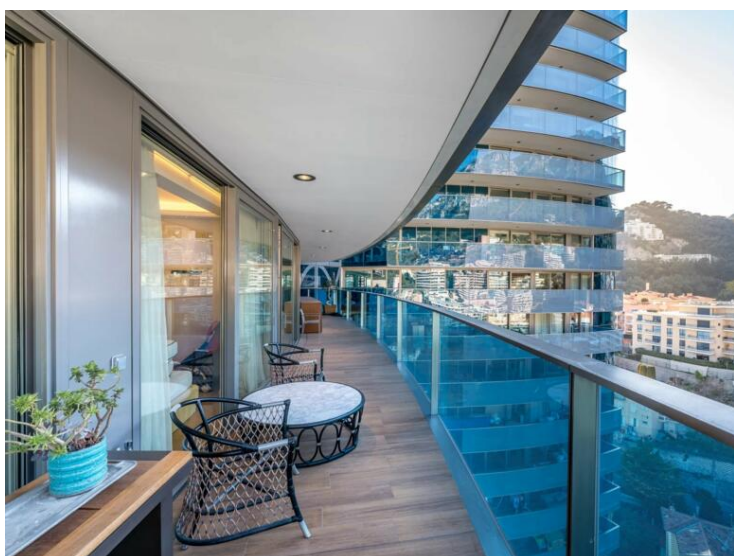


MonteCarlo-RealEstate.com

Seite
1/5

Hinweis : L1329MC

This document does not form part of any offer or contract. All measurements, areas and distances are approximate. The information and plans contained herein are believed to be correct, however, their accuracy is not guaranteed. The photographs show only certain parts of the property at the time they were taken. This offer is subject to change of price or other conditions, without prior notice.





JOHN TAYLOR

LUXURY REAL ESTATE SINCE 1864

John Taylor

Jean-Yves LE GRAVEREND

Tél : +377 6 07 93 46 21/+377 93 50 30 70

jylg@john-taylor.com

www.john-taylor.fr/agence-immobiliere-de-prestige/monaco



MonteCarlo-RealEstate.com

Seite 3/5

Hinweis : L1329MC

This document does not form part of any offer or contract. All measurements, areas and distances are approximate. The information and plans contained herein are believed to be correct, however, their accuracy is not guaranteed. The photographs show only certain parts of the property at the time they were taken. This offer is subject to change of price or other conditions, without prior notice.





JOHN TAYLOR

LUXURY REAL ESTATE SINCE 1864

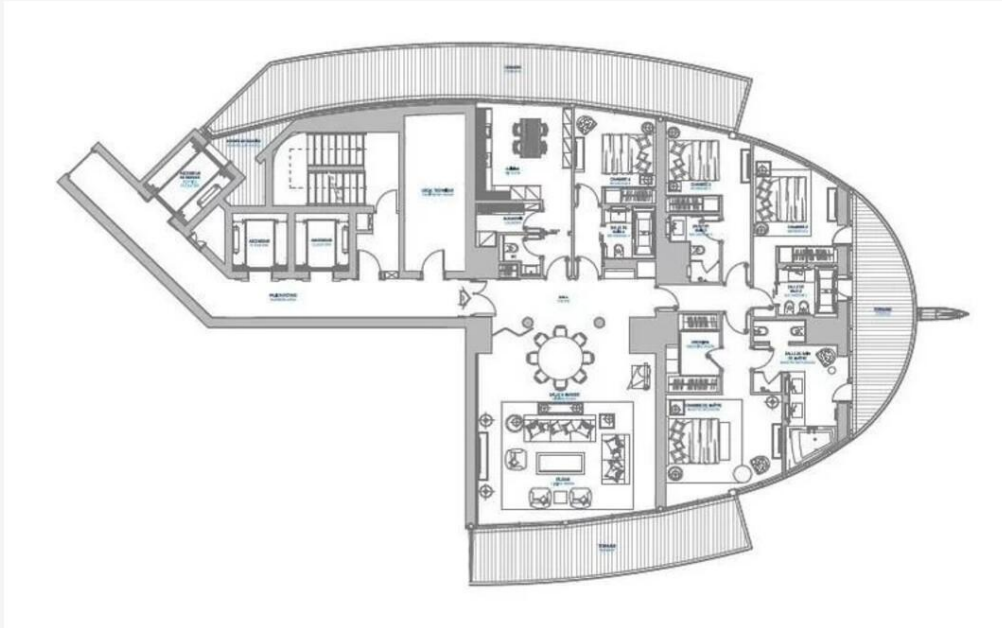
John Taylor

Jean-Yves LE GRAVEREND

Tél : +377 6 07 93 46 21/+377 93 50 30 70

jylg@john-taylor.com

www.john-taylor.fr/agence-immobiliere-de-prestige/monaco



MonteCarlo-RealEstate.com

Seite
5/5

Hinweis : L1329MC

This document does not form part of any offer or contract. All measurements, areas and distances are approximate. The information and plans contained herein are believed to be correct, however, their accuracy is not guaranteed. The photographs show only certain parts of the property at the time they were taken. This offer is subject to change of price or other conditions, without prior notice.