



EZE- New luxury residence - 3-room apartment with garden

For sale 879 000 €

<i>Product type</i> Apartment	<i>Num rooms</i> 3 rooms
<i>District</i> Èze	<i>City</i> Èze
<i>Country</i> France	<i>Living area</i> 81,68 m²
<i>Terrace area</i> 12,50 m²	<i>Garden area</i> 125,94 m²
<i>Total area</i> 220,12 m²	<i>Bedrooms</i> 2
<i>Bathrooms</i> 2	<i>Parkings</i> 2
<i>Floor</i> rez-de-jardin	<i>Condition</i> New
<i>View</i> sea	<i>Exposure</i> SOUTH
<i>Ref.</i> SP-RB-85905807	

Located in Èze, in an intimate and exceptional residence offering luxurious services as well as a breathtaking view of the sea and the picturesque village of Èze, discover this charming 3-room apartment with a garden.

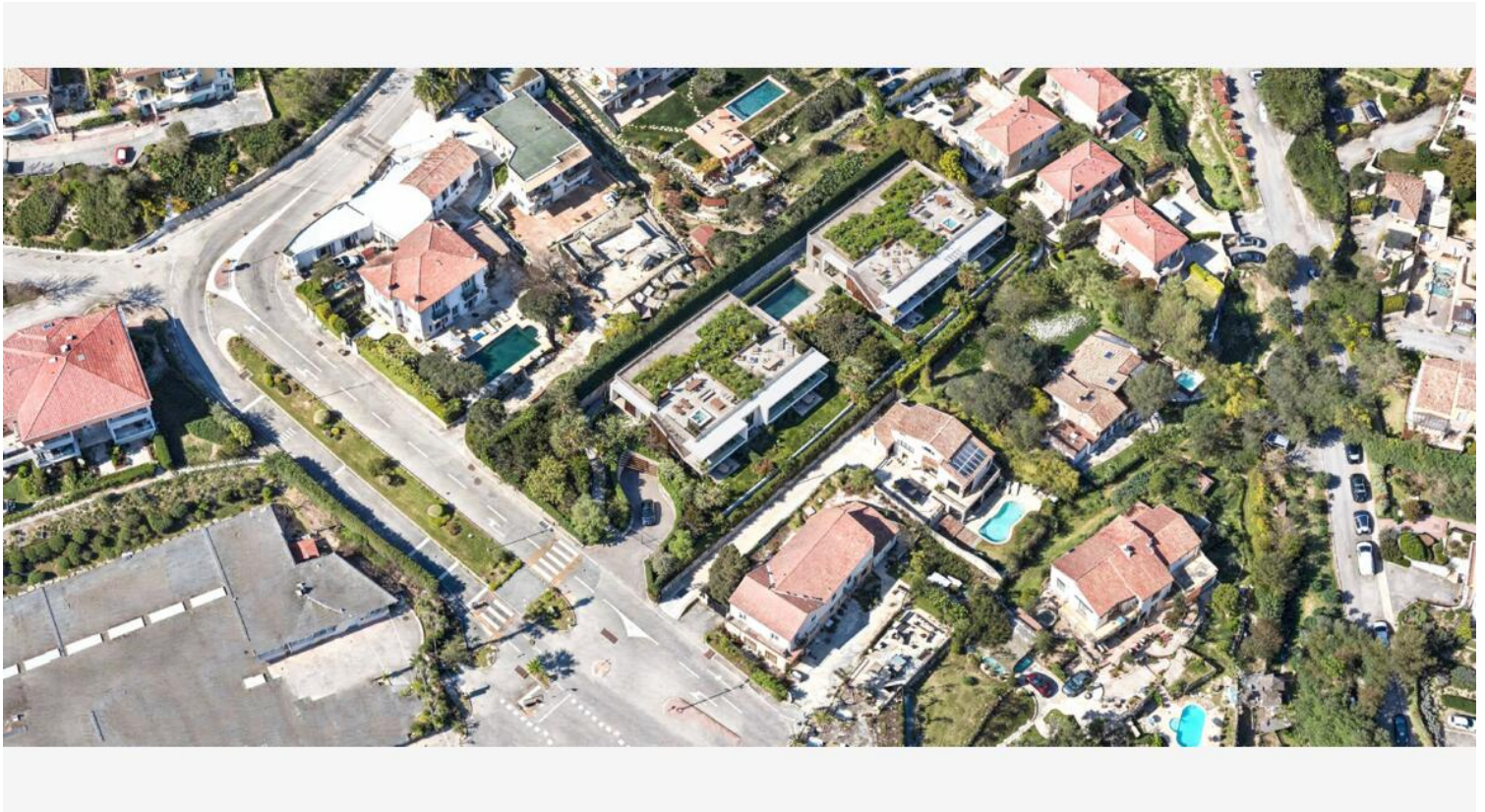
With a living area of 81.68 m², it consists of an entrance, a living room with open kitchen, two bedrooms, a bathroom, a shower room, a hallway and a guest toilet. The apartment also has a terrace of 12.50 m² and a garden of 125.94 m².



The residence is divided into two buildings, highlighting green spaces and creating a Provençal plant atmosphere, which brings freshness and shade to the gardens. In the heart of this nature, a sumptuous swimming pool and its beach complete this idyllic setting, ideal for relaxing in peace.

Two parking spaces complete the property.







954/962, Boulevard Maréchal Lédere
06 360 Eze

LOT 803

APPARTEMENT 3 PIECES-RDJ



Chambre 1	15,59
Chambre 2	13,15
Cuisine/Séjour	37,00
Entrée	3,84
Rgt	1,14
Salle de Bain	5,05
Salle d'Eau	4,06
WC	1,85

TOTAL SURFACE HABITABLE 81,68 m²

Jardin Privatif 125,94

Terrasse 12,50

TOTAL SURFACE EXTERIEURE 138,44 m²

TOTAL SURFACE UTILE 220,12 m²

- Baignoire thermodynamique
- Gaine
- Machine à laver
- Moustiquaire
- Plaque-plafond
- Point d'eau
- Porte-lanterne
- Vitrif roulant
- Tableau électrique

ATELIER ALLIONE
ARCHITECTES

