



ROQUEBRUNE-CAP-MARTIN – Belle Époque Villa to Renovate – Sea & Monaco Views

For sale

3 000 000 €

<i>Product type</i> Villa	<i>Num rooms</i> 6
<i>District</i> Cap Martin	<i>City</i> Roquebrune-Cap-Martin
<i>Country</i> France	<i>Living area</i> 220 m²
<i>Terrace area</i> 61,60 m²	<i>Garden area</i> 346 m²
<i>Total area</i> 627,60 m²	<i>Bedrooms</i> +5
<i>Bathrooms</i> 4	<i>Parkings</i> 3
<i>Cellar</i> 1	<i>Condition</i> Work required
<i>View</i> Sea & Monaco View	<i>Exposure</i> South
<i>Ref.</i> HP-VVLRM	

Just 5 minutes from Monaco, this south-facing Belle Époque villa offers panoramic views of the sea and the Principality. A rare opportunity for a full renovation in a quiet residential setting.

Located two steps from Monte-Carlo in Roquebrune-Cap-Martin, this charming south-facing Belle Époque villa



[MonteCarlo-RealEstate.com](https://www.MonteCarlo-RealEstate.com)

Page
1/7

Ref. : HP-VVLRM

Ce document ne fait partie d'aucune offre ou contrat. Toutes mesures, surfaces et distances sont approximatives. Le descriptif et les plans ne sont donnés qu'à titre indicatif et leur exactitude n'est pas garantie. Les photographies ne montrent que certaines parties de la propriété. L'offre est valable sauf en cas de vente, retrait de vente, changement de prix ou d'autres conditions, sans préalable.

enjoys all-day sunlight and sweeping views over the Mediterranean and Monaco.

The property requires full renovation and offers strong potential for a bespoke layout.

Current layout:

Ground floor

- Double living room with wide bay windows facing the sea and Monaco
- Separate, fully equipped kitchen
- Functional bathroom

First floor

- Six bedrooms, two of which open onto sea-view terraces
- One full bathroom
- One shower room

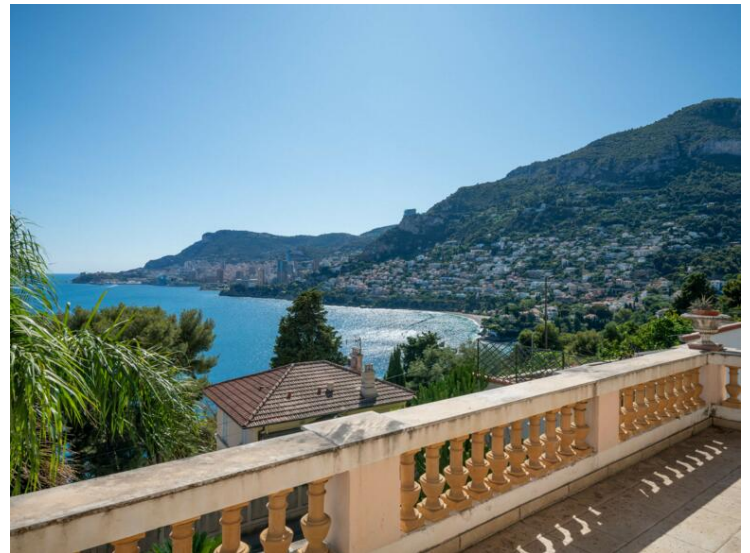
Rooftop level

- Accessed via a secondary independent entrance
- Two self-contained studios (16 and 20 sqm), ideal for guests or rental

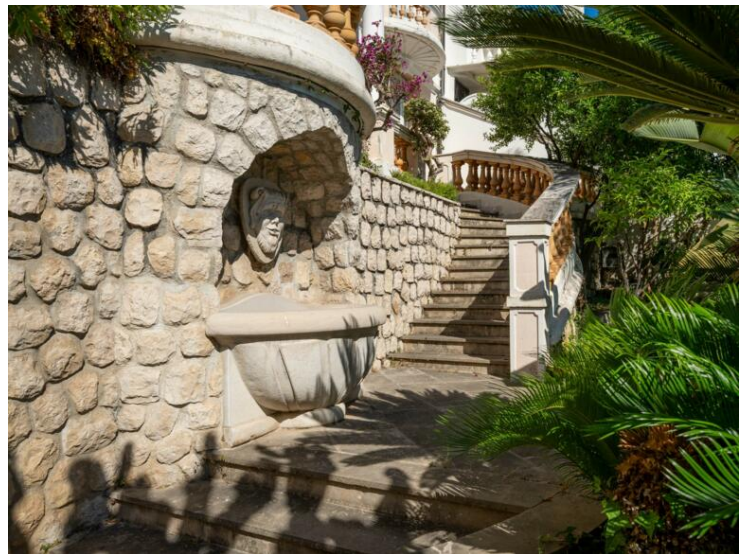
Annexes

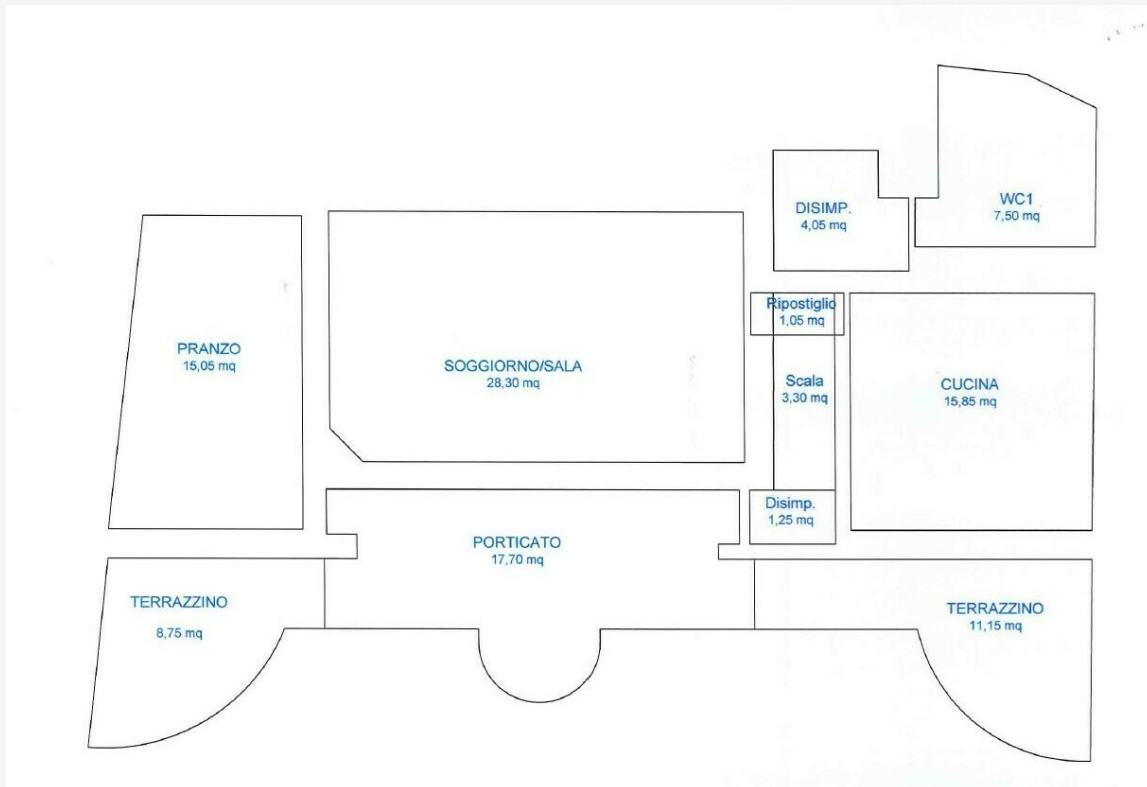
- Private garage of 44 sqm (for three vehicles)
- Storage cellar of 13.6 sqm

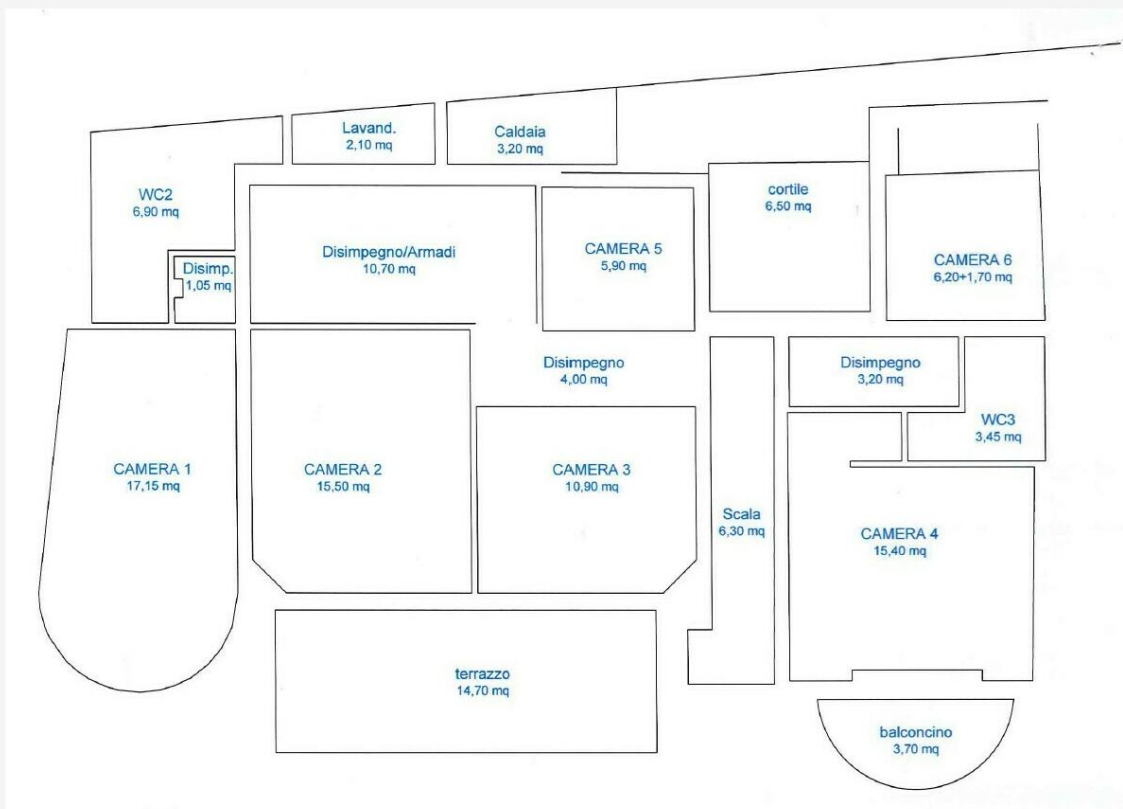












SUPERFICI PIANO SECONDO

