



JOHN TAYLOR

LUXURY REAL ESTATE SINCE 1864

John Taylor

20, boulevard des Moulins
98000 Monaco

Jean-Yves LE GRAVEREND

Phone : +377 6 07 93 46 21/+377 93 50 30 70

jylg@john-taylor.com

www.john-taylor.fr/agence-immobiliere-de-prestige/monaco



Carré d'Or - Le Mirabel - Compact & chic: the new generation duplex penthouse

For sale

Co-exclusive

8 450 000 €

<i>Product type</i> Apartment	<i>Num rooms</i> 2 rooms
<i>Building</i> Le Mirabel	<i>District</i> Carré d'Or
<i>Living area</i> 80 m²	<i>Terrace area</i> 51,50 m²
<i>Total area</i> 131,50 m²	<i>Bedroom</i> 1
<i>Bathrooms</i> 2	<i>Parking</i> 1
<i>Cellar</i> 1	<i>Floor</i> 8
<i>Condition</i> New	<i>Furnished</i> Yes
<i>View</i> Sea	<i>Exposure</i> East, Southeast, Southwest
<i>Ref.</i> V1850MC	

Exceptional penthouse in Mirabel: a duplex completely renovated and elegantly decorated, offering sea view, large landscaped terrace and top-of-the-range services, ideal for a pied-à-terre or a turnkey rental investment.



MonteCarlo-RealEstate.com

Page
1/5

Ref. : V1850MC

Ce document ne fait partie d'aucune offre ou contrat. Toutes mesures, surfaces et distances sont approximatives. Le descriptif et les plans ne sont donnés qu'à titre indicatif et leur exactitude n'est pas garantie. Les photographies ne montrent que certaines parties de la propriété. L'offre est valable sauf en cas de vente, retrait de vente, changement de prix ou d'autres conditions, sans préalable.

Located on the top two floors of the prestigious residence "Le Mirabel", this superb penthouse completely renovated and tastefully decorated is offered turnkey.

Spread over two levels, it offers a refined atmosphere combining luxury, comfort and functionality. The property is currently configured as 2 bedrooms, one of the bedrooms being converted into an office, ideal for teleworking or guests.

8th floor:

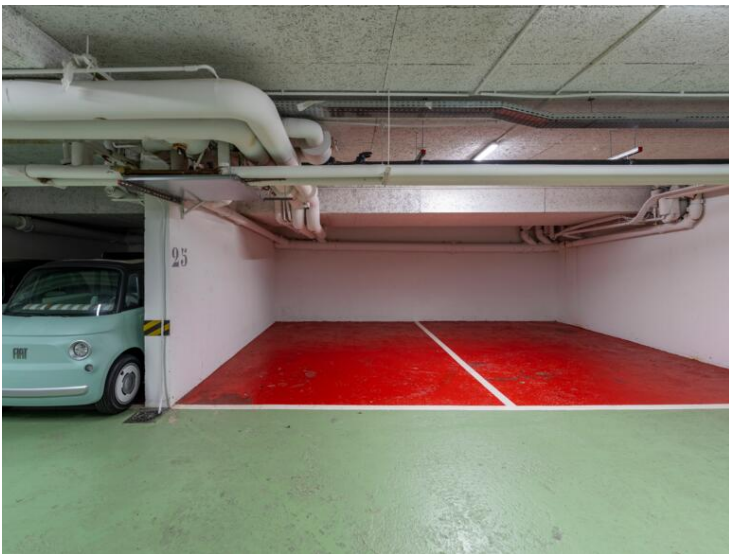
A bright south-east facing living room with sea view & Mareterra
A master bedroom with en-suite bathroom and dressing room
A second bedroom or office
A shower room
Guest toilet
An elegant staircase leading to the upper floor

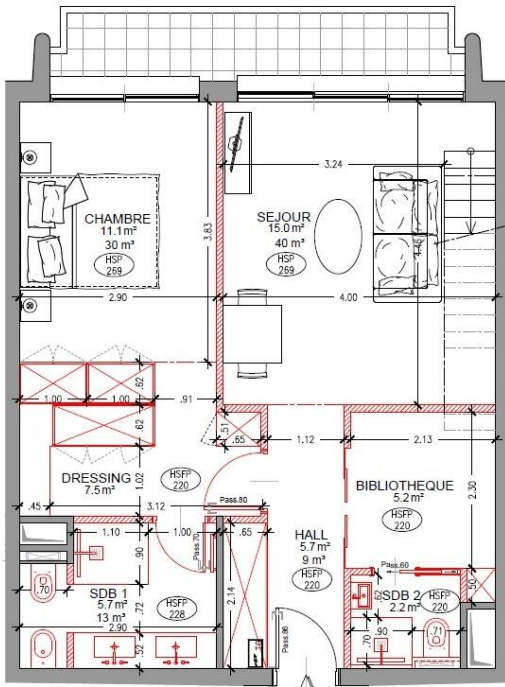
9th floor:

A fully equipped open kitchen
A dining area bathed in light thanks to a large bay window
Access to a landscaped terrace facing East-South-West, a true haven of peace
A cellar and a parking space of beautiful size 3.5 meters wide, complete this rare property.



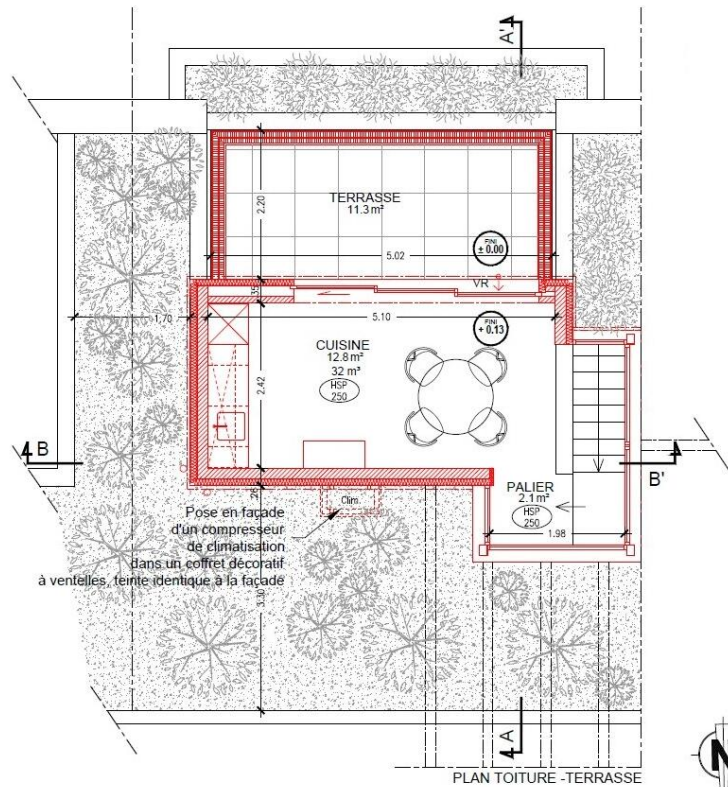






PLAN ETAGE R+8

PARTIES COMMUNES



PLAN TOITURE - TERRASSE

