



**MYCROWN**  
ESTATES

**MyCrown Estates**

1 Bd Princesse Charlotte  
98000 Monaco

Phone : +377 99 99 76 80  
info@mycrownestates.mc  
www.mycrownestates.mc



## Luxurious Family Apartment With Panoramic Views

Seasonal rental

Rent on request

<i>Product type</i> <b>Apartment</b>	<i>Num rooms</i> <b>+5 rooms</b>
<i>Building</i> <b>Monte Carlo View</b>	<i>District</i> <b>Jardin Exotique</b>
<i>Total area</i> <b>440 m<sup>2</sup></b>	<i>Bedrooms</i> <b>5</b>
<i>Bathrooms</i> <b>5</b>	<i>Parkings</i> <b>5</b>
<i>Cellars</i> <b>2</b>	<i>Floor</i> <b>17</b>
<i>Condition</i> <b>Luxurious services</b>	<i>View</i> <b>Panoramic: sea, mountains &amp; city</b>
<i>Exposure</i> <b>North, South, East, West</b>	<i>Ref.</i> <b>MCE146</b>

Building amenities: 24/7 concierge & elevators.

Sumptuous and spacious apartment occupying an entire floor of a modern and exceptional building, located in a quiet and residential area. Considered one of the most beautiful buildings in the Principality, this iconic property was designed by the renowned architect Jean-Michel Wilmotte. It is among the tallest buildings in Monaco and offers exceptional views stretching as far as the Italian coastline.

The apartment features a vast living area with its lounge opening onto a large terrace, offering a breathtaking panoramic view over the Principality, the Prince's Palace, and the endless blue of the Mediterranean Sea.



[MonteCarlo-RealEstate.com](http://MonteCarlo-RealEstate.com)

Page  
1/5

Ref. : MCE146

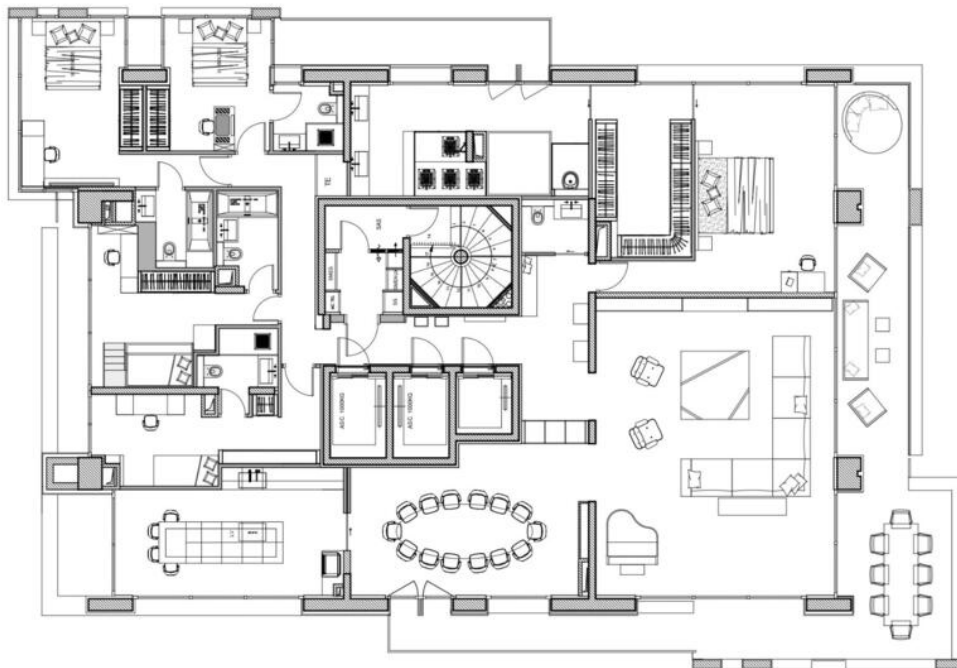
Ce document ne fait partie d'aucune offre ou contrat. Toutes mesures, surfaces et distances sont approximatives. Le descriptif et les plans ne sont donnés qu'à titre indicatif et leur exactitude n'est pas garantie. Les photographies ne montrent que certaines parties de la propriété. L'offre est valable sauf en cas de vente, retrait de vente, changement de prix ou d'autres conditions, sans préalable.

This property incorporates all modern comforts and high-end amenities, including home automation, an integrated ceiling sound system, underfloor heating, and air conditioning individually controlled from all main rooms. The floor-to-ceiling minimalist bay windows create a seamless connection between indoor and outdoor spaces, enhancing the spectacular views surrounding the property.

The apartment comprises 5 bedrooms, each with its own en-suite bathroom. The master bedroom opens onto a large terrace and features a home cinema, a double walk-in closet, as well as a spa area with a jacuzzi.

Luxury finishes and fittings throughout.

FLOOR PLAN



**- TERRACE**



**- TERRACE**



**- LIVING ROOM**



**- ENTRANCE**



**- DINING ROOM**



**- KITCHEN**



**- SUITE MASTER**



**- MASTER BATHROOM**



**ROOM 4**



**ROOM 2**



**- BEDROOM 3**



**BATHROOMS**



BEDROOM 1

