

Donatello : 1 Bedroom with Cellar & Parking

Rental

Sole agent

6 500 € / month

+ Service charges : 250 €

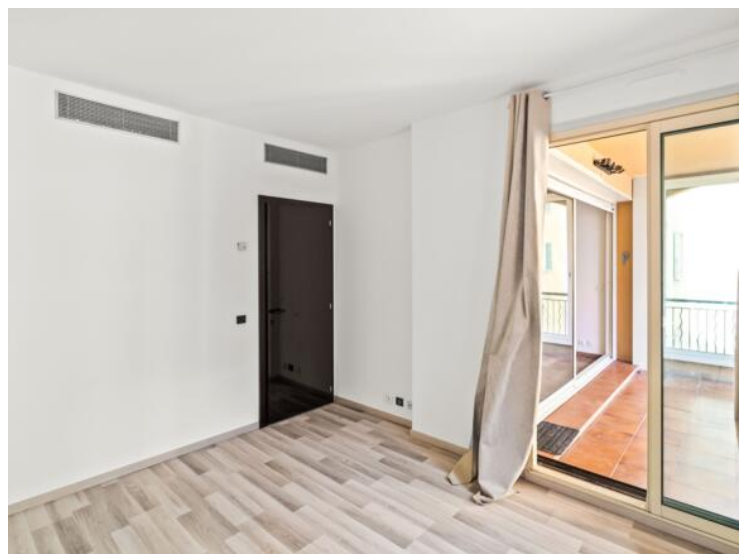
| | |
|--|---|
| <i>Product type</i> Apartment | <i>Num rooms</i> 2 rooms |
| <i>Building</i> Le Donatello | <i>District</i> Fontvieille |
| <i>Living area</i> 65 m² | <i>Terrace area</i> 7 m² |
| <i>Total area</i> 72 m² | <i>Bedroom</i> 1 |
| <i>Parking</i> 1 | <i>Cellar</i> 1 |
| <i>Floor</i> 2 | <i>Service charges</i> 250 € |
| <i>Condition</i> Very good condition | <i>Mixed use</i> Yes |
| <i>View</i> Garden | <i>Release date</i> 01/06/2026 |
| <i>Ref.</i> WL Donatello 003 | |

Located in the building with concierge of the "Donatello", this 1bedroom apartment consists of a main room with kitchen equiped, a bright bedroom and a large quiet terrace.

A cellar and a parking space in the building are included in the offer.





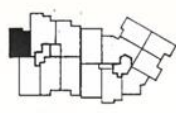






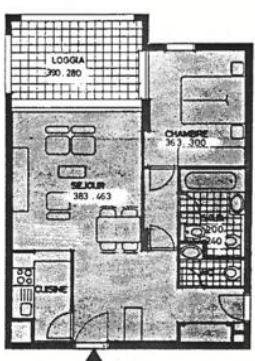
Résidence DONATELLO

NOUVEAU PORT DE MONACO
FONTVIEILLE VILLAGE



APPARTEMENT 2 pièces
NIVEAU 2, 3, 4.
SURFACE APP. 72,10 m²
HORS TOUT

A2 - 27 / 37 / 47



Les cotes indiquées sont approximatives
Le dessin et les dispositions générales de l'appartement sont susceptibles de variations en fonction des nécessités techniques.

