

Carré d'Or - Le Mirabel - 2 rooms

For sale

4 500 000 €

<i>Product type</i> Apartment	<i>Num rooms</i> 2 rooms
<i>Building</i> Le Mirabel	<i>District</i> Carré d'Or
<i>Total area</i> 68 m²	<i>Bedroom</i> 1
<i>Bathroom</i> 1	<i>Floor</i> 5
<i>Annual costs</i> 14 500 €	<i>Condition</i> To refresh
<i>Mixed use</i> Yes	<i>Release date</i> 30/04/2029
<i>Ref.</i> V1915MC	

Ideally located in the heart of Monte-Carlo, in the Le Mirabel residence with concierge service, a stone's throw from the Casino and shops, this apartment on a high floor benefits from a privileged environment.

Located on the 5th floor, it consists of an entrance, a living room opening onto a terrace, an independent kitchen, a bedroom, a dressing room, a bathroom and a toilet.

The property is currently rented and offers an interesting profitability.

Possibility to acquire a parking space at an additional cost.

Located in the Le Mirabel building, with concierge service, in the immediate vicinity of the Casino and shops, this apartment is on the 5th floor.

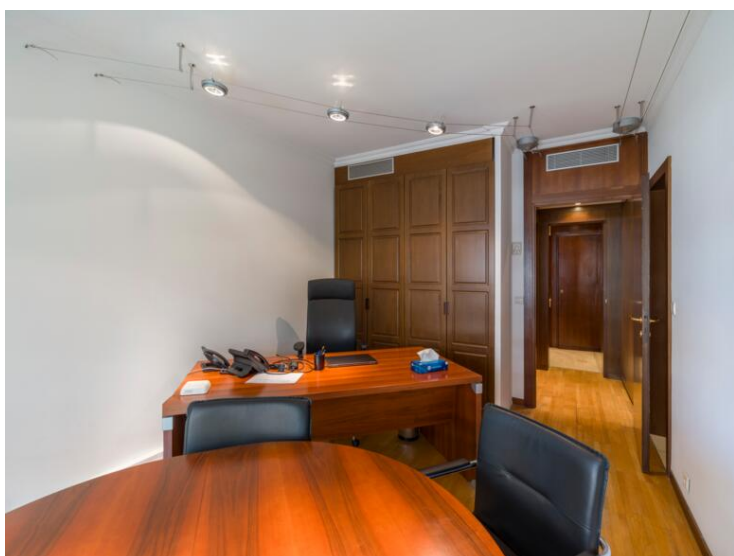
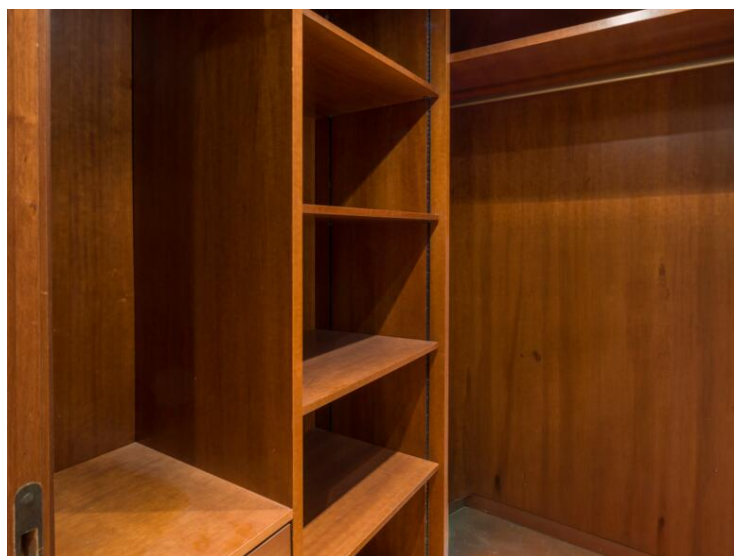
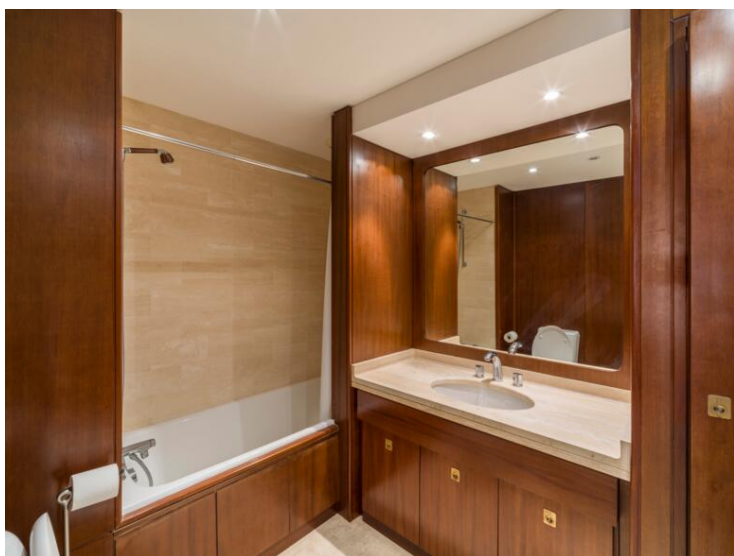
It consists of an entrance, a living room opening onto a terrace, an independent kitchen, a bedroom, a dressing room, a bathroom and a toilet.



The property is currently rented and offers an interesting profitability.

Possibility to buy parking in addition.







JOHN TAYLOR

LUXURY REAL ESTATE SINCE 1864

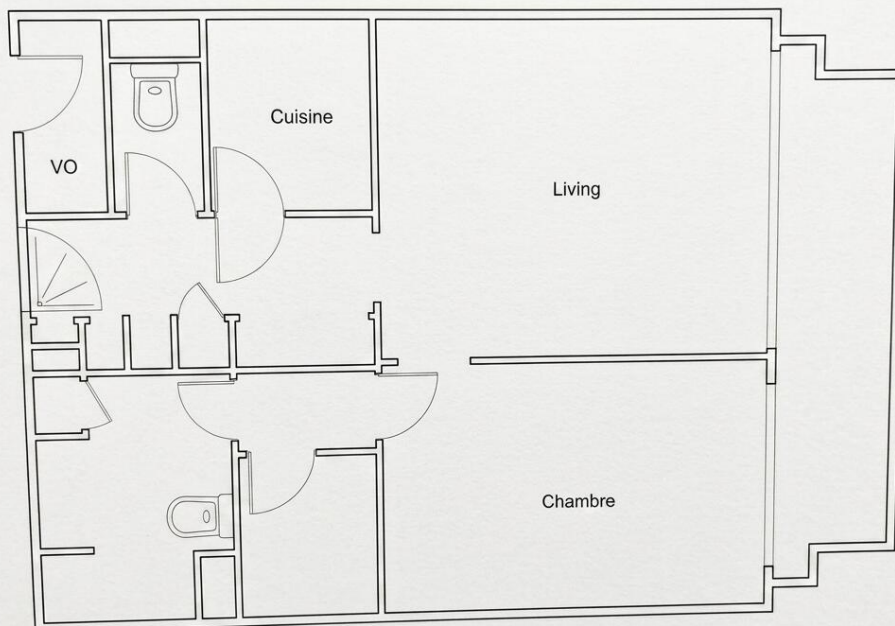
John Taylor

Jean-Yves LE GRAVEREND

Phone : +377 6 07 93 46 21/+377 93 50 30 70

jylg@john-taylor.com

www.john-taylor.fr/agence-immobiliere-de-prestige/monaco



MonteCarlo-RealEstate.com

Page
4/4

Ref. : V1915MC

Ce document ne fait partie d'aucune offre ou contrat. Toutes mesures, surfaces et distances sont approximatives. Le descriptif et les plans ne sont donnés qu'à titre indicatif et leur exactitude n'est pas garantie. Les photographies ne montrent que certaines parties de la propriété. L'offre est valable sauf en cas de vente, retrait de vente, changement de prix ou d'autres conditions, sans préalable.