



Raphael - new offices - large window display on gardens

Professional sale

3 710 000 €

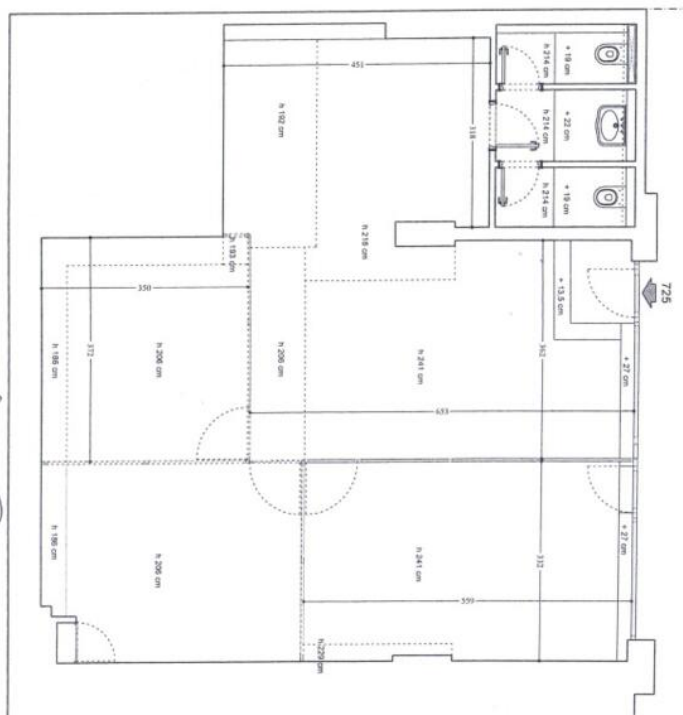
<i>Product type</i> Office	<i>Building</i> Raphael
<i>District</i> Fontvieille	<i>Total area</i> 94 m²
<i>Condition</i> Very good condition	<i>Rented</i> Yes
<i>View</i> Gardens views	<i>Release date</i> 30.09.2026
<i>Ref.</i> 2753	

Ideally located facing the marina, close to numerous restaurants and the Fontvieille Shopping Mall . This quietly located administrative office has a large display window with gardens view. It has been completely refurbished with parquet flooring. It comprises a large room that can easily be partitioned, coffee corner and a restrooms L/G. Air conditioning, heating and water are included in the charges. 24hour security service

Leased until 09.30.2026







Résidence « Raphael »
Bureaux
n° 725-7250



