

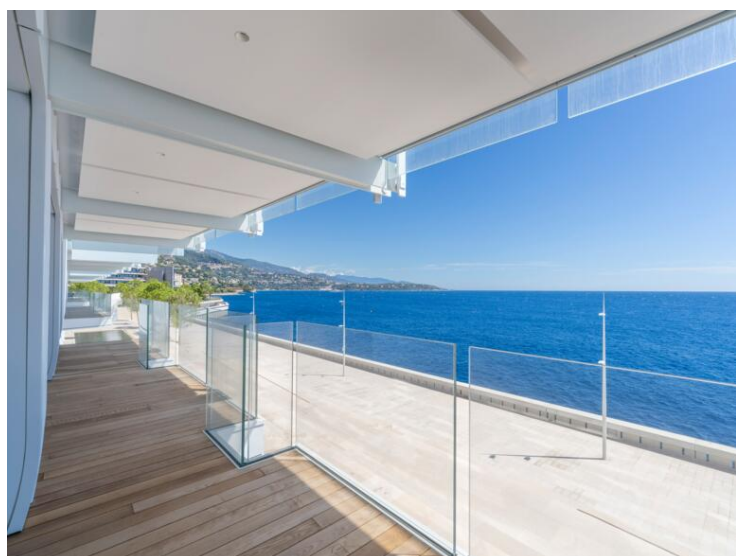
Vendita

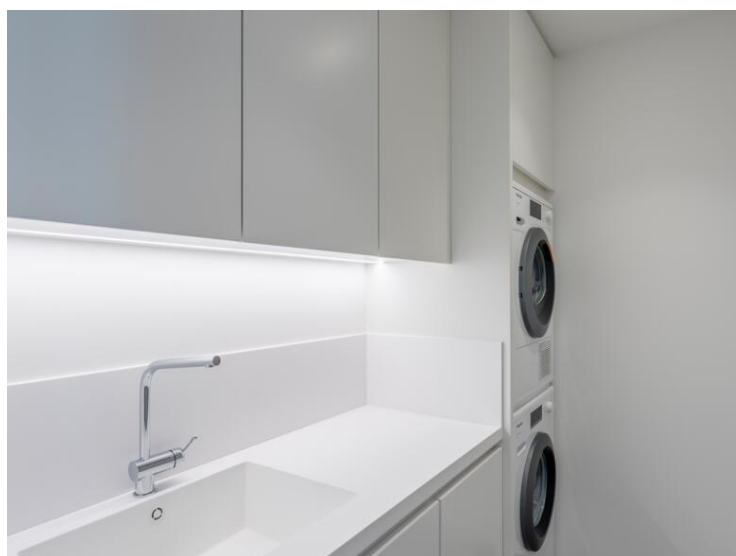
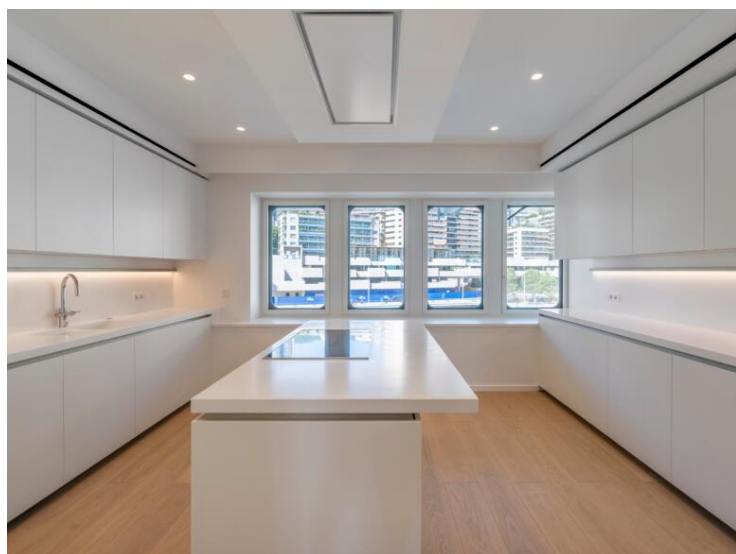
Esclusività

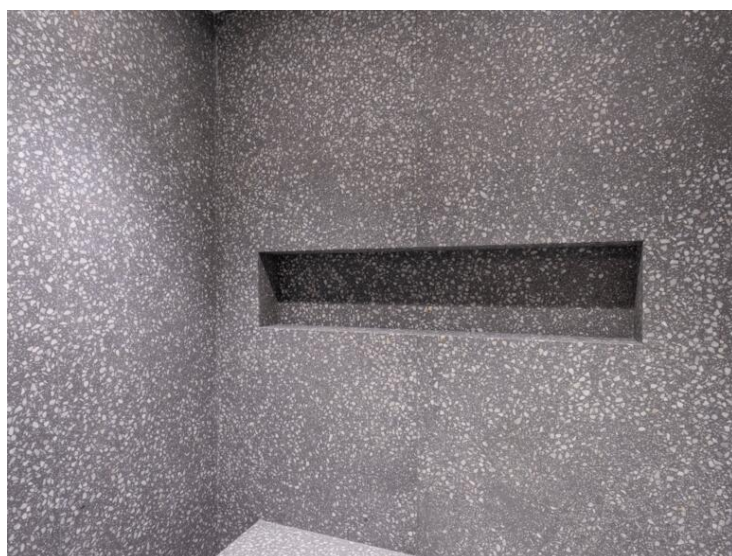
Prezzo su richiesta

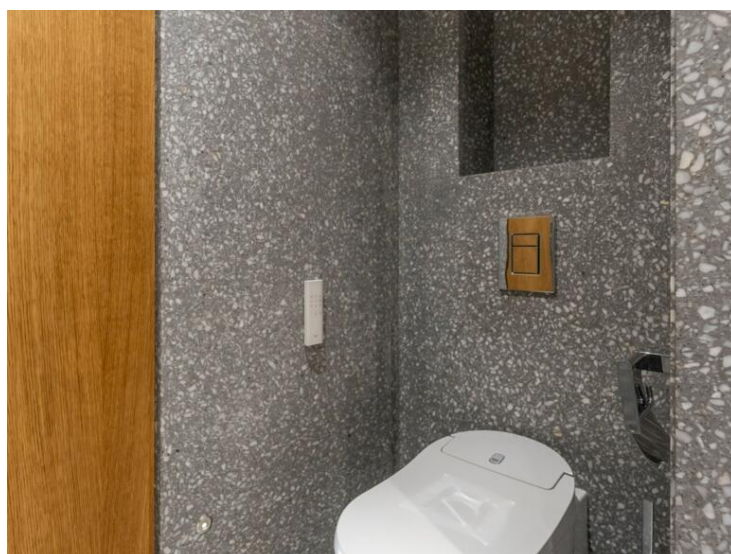
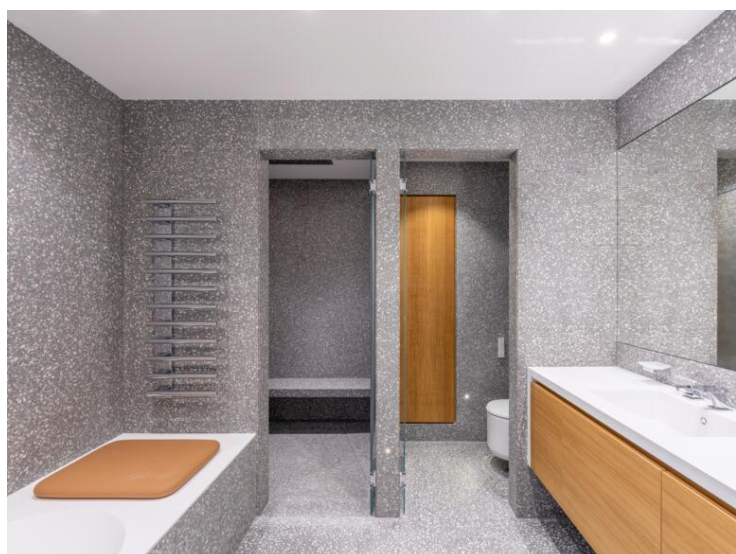
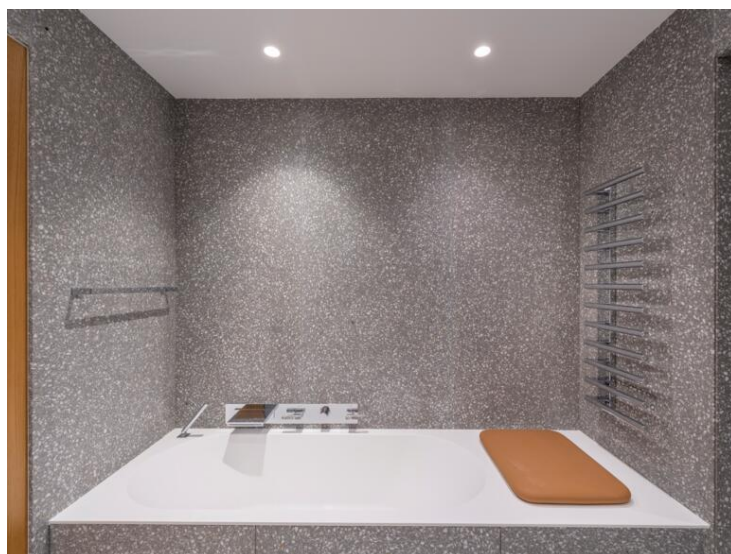
<i>Tipo di proprietà</i> Appartamento	<i>Stanze</i> 4 stanze	<i>Edificio</i> Le Renzo	<i>Quartiere</i> Anse du Portier
<i>Superficie abitabile</i> 378 m²	<i>Superficie terrazza</i> 32 m²	<i>Superficie totale</i> 410 m²	<i>Camere</i> 3
<i>Bagni</i> 3	<i>Parcheggi</i> 3	<i>Cantina</i> 1	<i>Livello</i> 1
<i>Condizione</i> Nuovo	<i>Data di liberazione</i> Immédiatement	<i>Rif.</i> Renzo 410 45.0	

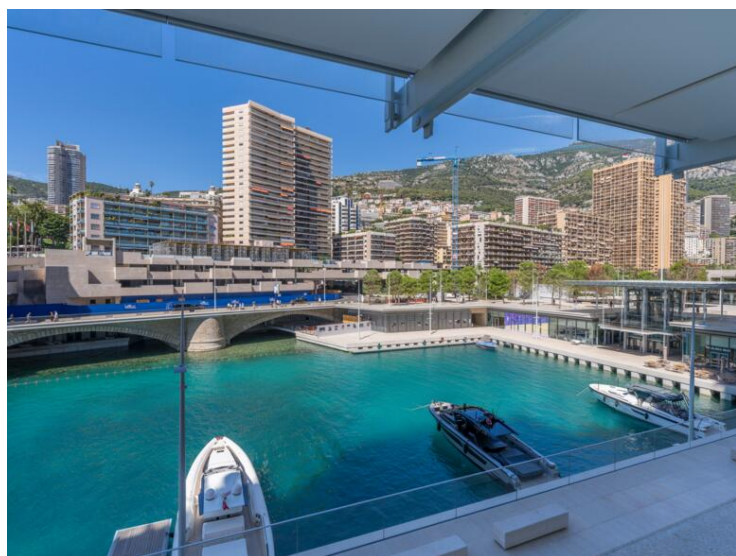
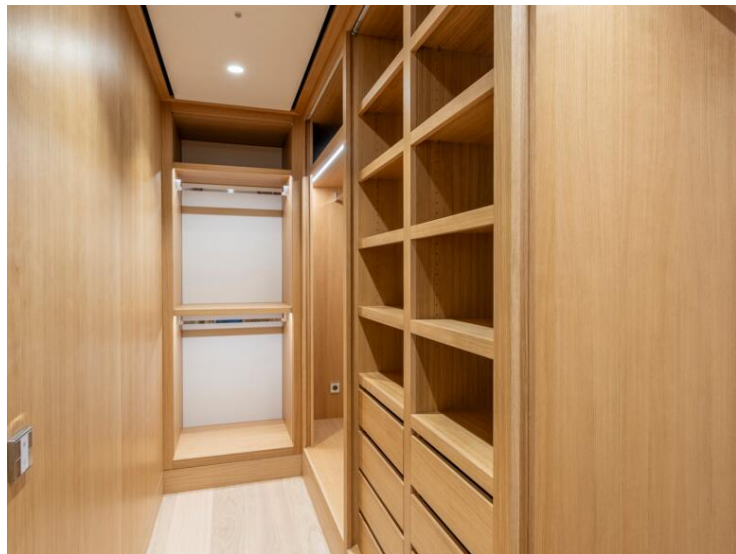
















Simplex

Floor 1 4 Main Rooms

Interior Area

375 m²

Exterior Area

32 m²

Total Area

410 m²

Highlights

1 Master Entrance

1 Living and Dining Room

1 Master Bedroom with 1 Dressing Room and 1 Bathroom

1 Bedroom

with Dressing Room and Bathroom

1 Office/Bedroom with Kitchenette and Bathroom

1 Kitchen

1 Utility Room

1 Guest Powder Room and Cloakroom

1 Sea View Terrace



Sea View Elevation



Master Plan



0m 1m 2.5m

Any areas, volumes or measurements are given for information only, and have no contractual value



