



CAROLI REAL ESTATE
GROUPE CAROLI

Caroli Real Estate

27, boulevard d'Italie
98000 Monaco

Tél : +377 93 25 51 22

Fax : +377 92 16 17 00

commercial.carolirealestate@groupecaroli.mc

www.caroli-realestate.com



Verkauf

Exclusivité

Preis auf Anfrage

Produkttyp
Wohnung

Zimmer
6

Gebäude
Seaside Plaza

District
Fontvieille

Wohnfläche
265 m²

Terrasse Fläche
92 m²

Totale Fläche
357 m²

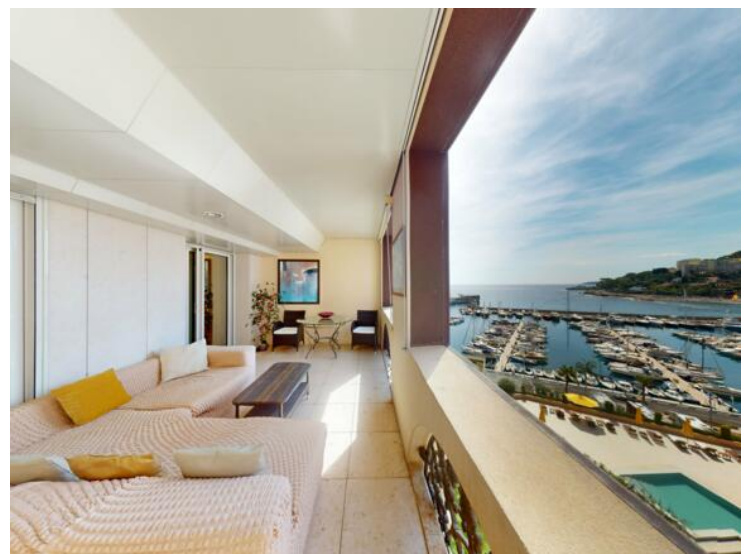
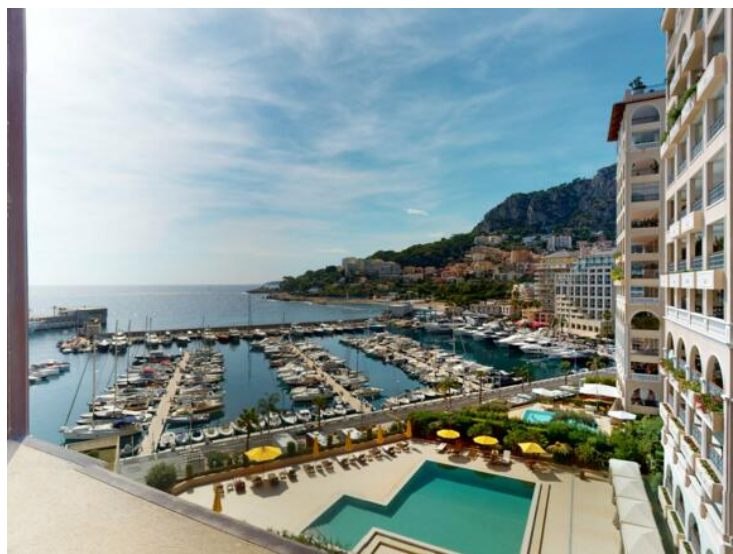
Chambres
4

Salles de bains
4

Parkplätze
2

Keller
2

Hinweis
SEASIDE_PENT



MonteCarlo-RealEstate.com

Seite
1/5

Hinweis : SEASIDE_PENT

This document does not form part of any offer or contract. All measurements, areas and distances are approximate. The information and plans contained herein are believed to be correct, however, their accuracy is not guaranteed. The photographs show only certain parts of the property at the time they were taken. This offer is subject to change of price or other conditions, without prior notice.



CAROLI REAL ESTATE
GROUPE CAROLI

Caroli Real Estate

Tél : +377 93 25 51 22

Fax : +377 92 16 17 00

commercial.carolirealestate@groupecaroli.mc

www.caroli-realestate.com

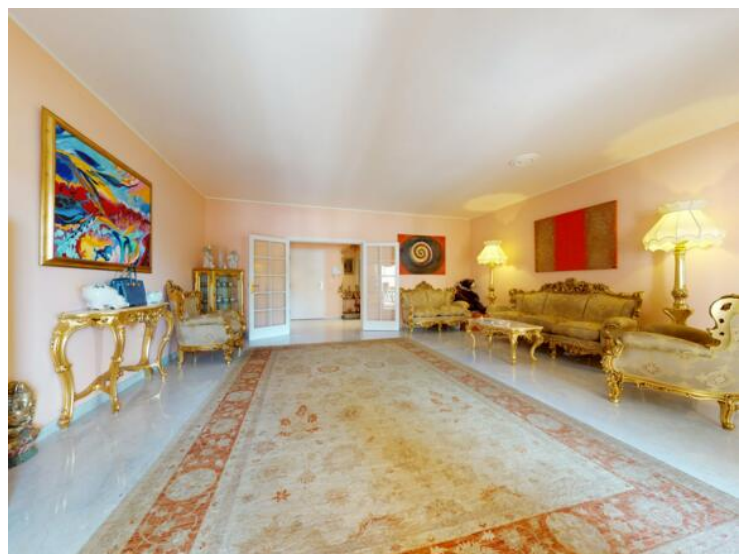
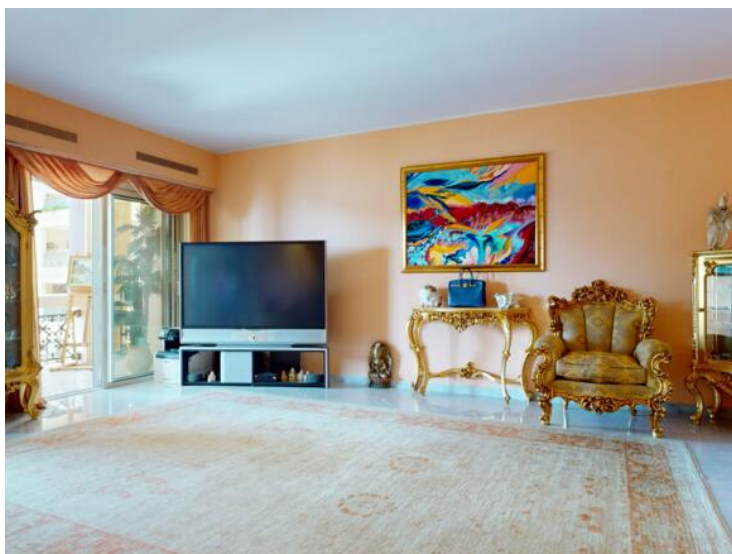


MonteCarlo-RealEstate.com

Seite
2/5

Hinweis : SEASIDE_PENT

This document does not form part of any offer or contract. All measurements, areas and distances are approximate. The information and plans contained herein are believed to be correct, however, their accuracy is not guaranteed. The photographs show only certain parts of the property at the time they were taken. This offer is subject to change of price or other conditions, without prior notice.





CAROLI REAL ESTATE
GROUPE CAROLI

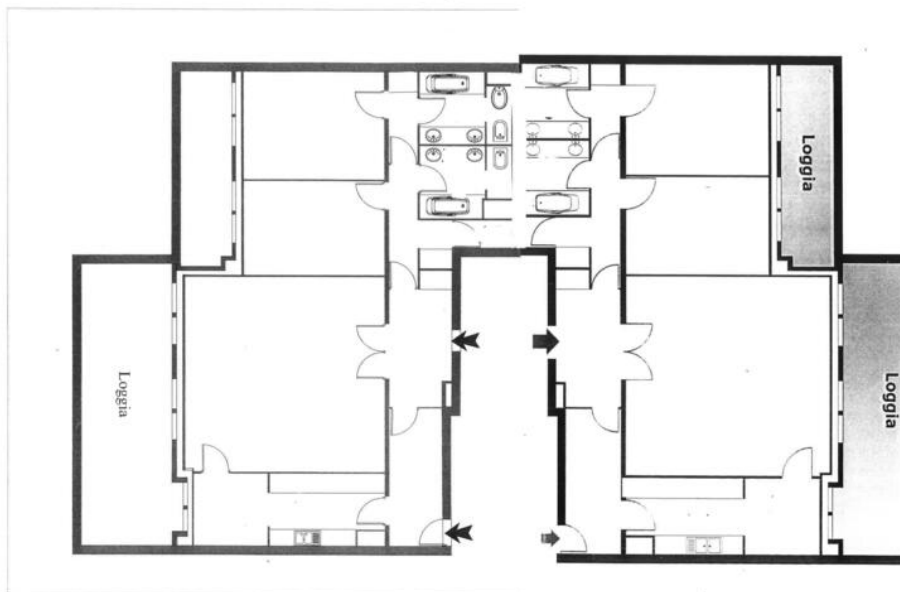
Caroli Real Estate

Tél : +377 93 25 51 22

Fax : +377 92 16 17 00

commercial.carolirealestate@groupecaroli.mc

www.caroli-realestate.com



MonteCarlo-RealEstate.com

Seite
4/5

Hinweis : SEASIDE_PENT

This document does not form part of any offer or contract. All measurements, areas and distances are approximate. The information and plans contained herein are believed to be correct, however, their accuracy is not guaranteed. The photographs show only certain parts of the property at the time they were taken. This offer is subject to change of price or other conditions, without prior notice.



CAROLI REAL ESTATE
GROUPE CAROLI

Caroli Real Estate

Tél : +377 93 25 51 22

Fax : +377 92 16 17 00

commercial.carolirealestate@groupecaroli.mc

www.caroli-realestate.com



MonteCarlo-RealEstate.com

Seite
5/5

Hinweis : SEASIDE_PENT

This document does not form part of any offer or contract. All measurements, areas and distances are approximate. The information and plans contained herein are believed to be correct, however, their accuracy is not guaranteed. The photographs show only certain parts of the property at the time they were taken. This offer is subject to change of price or other conditions, without prior notice.